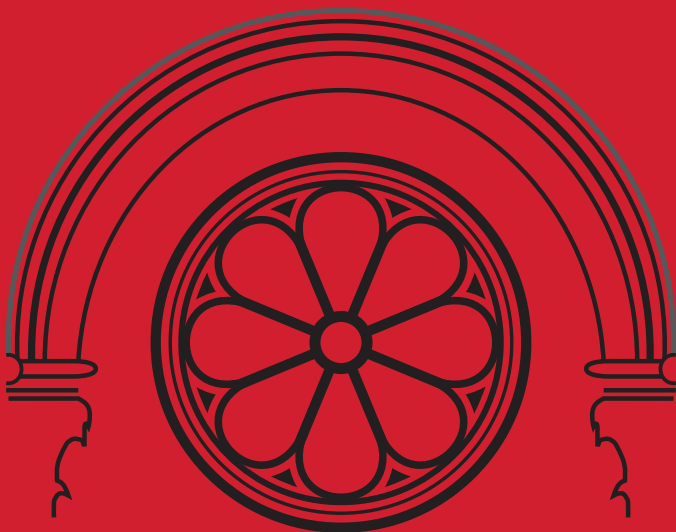


**SAINT JOSEPH  
SEMINARY  
COLLEGE**

ONE HUNDRED EIGHTH BULLETIN  
2017-2018 and 2018-2019



## **STATEMENT OF NONDISCRIMINATION, EQUAL OPPORTUNITY, SEXUAL HARASSMENT, AND RESPECT FOR PRIVACY**

Saint Joseph Seminary College conscientiously seeks to comply with all applicable legislation concerning nondiscrimination in employment practices and in development of personnel, concerning the protection of faculty and student rights of privacy and access to information, and concerning accommodations for the handicapped. To ensure the integrity of the Seminary College, respectful behavior must be evident in relationships among administrators, faculty, staff, and students. Unwelcome sexual encouragement, requests for sexual favors, and other verbal and/or physical conduct of a sexual temperament are not respectful behaviors and are not in keeping with the mission of Saint Joseph Seminary College.

To the extent required by law, Saint Joseph Seminary College complies with Title IX of the Education Amendments of 1972 (Title IX). Any concerns or complaints involving sexual harassment, sexual misconduct, or sexual assault may be directed to the Title IX Coordinator- Fr. Jonathan Wallis, Dean of Students (frwallis@sjasc.edu or 985-867-2287).

### **NOTICE**

Saint Joseph Seminary College has taken a number of initiatives relative to the prevention of illegal drug use as well as to campus security. Given the nature of the school, the small size of the student body, and the school's location, few of the problems faced by students at other colleges are encountered here. The Dean of Students can provide information about policies, procedures, and statistics pertaining to these matters.

Every reasonable effort has been made to present information herein which, at the time of printing, accurately describes the curriculum and the regulations and requirements of the Seminary College. Statements in the bulletin do not establish contractual relationships, and the Seminary College reserves the right to make changes as required in course offerings, curricula, academic policies, and other rules and regulations affecting students, to be effective whenever determined by the Seminary College. These changes will govern current and formerly enrolled students. Enrollment of all students is subject to these conditions.

To obtain further information concerning the college, its accreditation documents, student graduation rate and other statistical data, please contact the office of the President-Rector.

# Saint Joseph Seminary College

ONE HUNDRED EIGHTH BULLETIN  
2017-2018 and 2018-2019



# TABLE OF CONTENTS

Board of Trustees.....	4	
Administrative Officers and Staff.....	4	
Faculty .....	5	
<b>OVERVIEW</b>		
Mission Statement.....	8	
History And Vision .....	8	
The Seminary Formation Program.....	9	
<b>STUDENT ACTIVITIES</b>		
Student Government Association.....	10	
<b>SPECIAL STUDENT PROGRAMS</b>		
Mission Immersion Program.....	10	
Abbey Youth Festival .....	11	
English As A Second Language (ESL) Program.....	11	
<b>ROUQUETTE LIBRARY</b> .....		12
<b>GENERAL INFORMATION</b>		
Accreditation .....	12	
Academic Membership.....	13	
Administration And Ownership .....	13	
<b>FINANCIAL INFORMATION</b>		
Refund Policy.....	13	
Financial Aid .....	14	
Veterans.....	14	
<b>SPECIAL ENROLLMENT PROGRAMS</b>		
Senior Scholars Program .....	15	
Courses For Audit .....	15	
<b>ADMISSIONS POLICY</b>		
General Admissions Information.....	15	
Application For Admission – All Applicants Must Provide The Following: .....	15	
Enrollment - Full-Time Resident Students .....	16	
Admission Information - Non-Resident Students, Part-Time Students.....	17	
Re-Admission Policy .....	18	
Re-Admission Procedure .....	18	
Re-Enrollment – Full-Time Resident Seminarian .....	18	
<b>FINANCIAL AID INFORMATION FOR PROSPECTIVE STUDENTS</b> .....		18
General Information for Financial Aid.....	18	
FAFSA .....	19	
Veterans Affairs.....	19	

<b>FACILITIES/ACCOMMODATIONS FOR STUDENTS WITH PHYSICAL AND LEARNING DISABILITIES</b> .....	20
<b>QUALITY ENHANCEMENT PLAN</b> .....	20
<b>ACADEMIC INFORMATION</b>	
General Education Requirements.....	21
Classification Of Students .....	21
Academic Honesty.....	22
Discipline Committee .....	22
Grading System .....	23
Quality Points And Academic Honors .....	24
Dean’s List .....	24
Attendance And Withdrawal.....	24
Academic Probation And Suspension .....	24
Transfer Of Credits.....	25
Credit And Placement By Examination .....	25
Transcripts .....	26
Release Of Student Information .....	27
<b>PROGRAMS OF STUDY</b>	
B.A. In Philosophy And The Liberal Arts.....	27
B.A. In Philosophy And Theological Studies.....	29
Pre-Theology Program.....	31
Components Of The Pre-Theology Program .....	32
Pre-Theology Curriculum.....	33
<b>DEPARTMENTS OF INSTRUCTION</b>	
Language, Literature, And Fine Arts .....	34
Philosophy And Theological Studies .....	38
Social, Behavioral, And Natural Sciences.....	42
<b>LOCATION AND PHYSICAL PLANT</b> .....	45
<b>DIRECTIONS</b> .....	46
<b>SAINT JOSEPH SEMINARY ALUMNI ASSOCIATION</b> .....	46
<b>DIRECTORY</b> .....	47
<b>INDEX</b> .....	48

## BOARD OF TRUSTEES

Most Reverend Gregory M. Aymond, D.D., Archbishop of New Orleans, Chancellor and Chairman of the Board

Right Reverend Justin G. Brown, O.S.B., M.A.Th., Vice Chairman of the Board and Abbot of Saint Joseph Abbey

Very Reverend Gregory M. Boquet, O.S.B., M.A.Th., President-Rector, Saint Joseph Seminary College

Most Reverend Robert J. Baker, D.D., Bishop of Birmingham

Most Reverend J. Douglas Deshotel, D.D., Bishop of Lafayette

Most Reverend Michael G. Duca, D.D., Bishop of Shreveport

Most Reverend Shelton J. Fabre, D.D., Bishop of Houma-Thibodaux

Most Reverend Louis F. Kihnemann III, D.D., Bishop of Biloxi

Most Reverend Joseph R. Kopacz, D.D., Bishop of Jackson

Most Reverend Robert W. Muench, D.D., Bishop of Baton Rouge

Most Reverend Glenn John Provost, D.D., Bishop of Lake Charles

Most Reverend Thomas S. Rodi, D.D., J.D., J.C.L. Archbishop of Mobile

Most Reverend David P. Talley, D.D., Bishop of Alexandria

Very Reverend James A. Wehner, S.T.D., Rector-President, Notre Dame Seminary

Dr. Edward P. Cancienne, Jr., Belle Rose

Mr. James Harrington, Biloxi

Dr. David Landry, New Orleans

Dr. Steve Landry, Lafayette

## ADMINISTRATIVE OFFICERS AND STAFF

Very Reverend Gregory M. Boquet, O.S.B., M.A.Th., President-Rector

Cindy Markham, Administrative Assistant to the President-Rector

Reverend Matthew R. Clark, O.S.B., M.A.Th., Vice Rector and Director of Alumni Affairs

Reverend Jonathan Wallis, S.T.L., Dean of Students and Office of Student Health

Reverend Samuel Fontana, Assistant Dean of Students

Daniel P. Burns, Ph.D., Academic Dean

Caroline Bizot, Registrar and Director of Financial Aid

Michelle Boullion, Receptionist and Administrative Support Assistant

Reverend Kenneth G. Davis, O.F.M., Conv., Spiritual Director

Dianna Laurent, Ph.D., Director of Institutional Effectiveness

Bonnie Bess Wood, M.L.S., Director of Library

Jennifer Whitehouse, Chief Financial Officer

Carla Graves, Director of Human Resources

Andrea Boudreaux, Business Office Manager

Katie Plude, Staff Accountant

Scott Wallace, Development Director  
Jim Robeau, Director of Physical Plant  
Todd Russell, Director of Information Technology

## FACULTY

DAVID ARBO

B.S., M.S., Washington University, St. Louis

EPHREM K. ARCEMENT, O.S.B. (Rev.)

B.A., Saint Joseph Seminary College; M.A., Regent University; M.A.Th., Notre Dame Seminary; Ph.D., The Catholic University of America

GEOFFREY BAIN

B.A., M.A., Ph.D., Louisiana State University; M.A., University of Kentucky;  
M.A., Notre Dame Seminary

MICHAEL BAROCCO

B.A., Saint Joseph Seminary College; M.Ed., University of New Orleans

JOSETTE BEAULIEU-GRACE

B.A., Anna Maria College; M.A., Universite de Montreal, Canada

ROBERT BERGER

B.S., Thomas Edison State College; M.A., The Catholic University of America

DANIEL BURNS

B.A., Saint Joseph Seminary College; M.A.Th., Notre Dame Seminary; Ph.D., Loyola University, Chicago

ROBERT CALMES

B.S, Louisiana State University; M.A., North Carolina State University

MATTHEW R. CLARK, O.S.B. (Rev.)

B.A., Saint Joseph Seminary College; M.A.Th., Notre Dame Seminary

JONATHAN DEFRANGE, O.S.B. (Rev.)

B.A., University of Dallas; M.T.S., Notre Dame Seminary; M.A., Louisiana State University; Ph.D., The Catholic University of America

CASEY EDLER

B.A., St. Joseph Seminary College; M.A., Louisiana State University; Ph.D., University of St. Thomas, Houston

WILLIAM J. FARGE, S.J. (Rev.)

B.A., Loyola University, New Orleans; M.A., S.T.L., Sophia University, Tokyo;  
M.A., Ph.D., Indiana University

AUGUSTINE E. FOLEY, O.S.B. (Rev.)

B.A., Saint Joseph Seminary College; M.T.S., Notre Dame Seminary; M.A., The  
Catholic University of America; S.T.B., M.A., Katholieke Universiteit Leuven, Leuven,  
Belgium

SAMUEL FONTANA (Rev.)

B.A., Ph.L., The Catholic University of America; M.Div., Mount St. Mary's  
University; S.T.B., Pontifical Faculty of the Immaculate Conception

BENJAMIN FREDERICK

B.M.Ed., University of Louisiana at Lafayette; M.M.Ed., University of Texas at Austin

THOMAS L. GWOZDZ, S.D.B. (Rev.) Malachy Burns Professor of Philosophy

B.A., Don Bosco College; M.A., Pontifical College Josephinum;  
M.A (Philosophy), M.A. (Spirituality), Ph.D., Fordham University

CORY HAYES

B.A., Saint Joseph Seminary College; M.A., Notre Dame Seminary, Ph.D., Duquesne  
University

JOHN E. HEBERT, Professor Emeritus

B.A., Saint Joseph Seminary College; M.A., Ph.D., University of Southern  
Mississippi

JENNIFER HEIL

B.A., Louisiana State University; M.A., Tulane University; Ph.D., Emory University

DAMIAN HINOJOSA (Rev.)

B.A., University of St. Thomas; M.A., Middlebury College; Ph.D., University of Texas  
at Austin; M.Div., Toronto School of Theology

JUDE M. ISRAEL, O.S.B., (Rev.)

B.S., Loyola University; M.Ed., University of New Orleans, M.A., St John's University,  
Collegeville, MN

JEANNE d'ARC KERNION, O.S.B., Professor Emerita

B.A., Mount St. Scholastica College, Atchison, KS; M.A., University of Notre Dame

EMMANUEL LABRISE, O.S.B. (Br.)

B.S., Saint Vincent College; M.A., Bowling Green State University; M.A., Notre Dame  
Seminary



MICHAEL LANE

B.A., Baylor University; M.A., Louisiana State University

DIANNA LAURENT

B.A., M.A., Southeastern Louisiana University; Ph.D., University of Mississippi

JUDE LUPINETTI

B.A., M.A., Ed.S., Ph.D., University of Southern Mississippi; M.Cert., University of Florida

JOANN MONTALBANO

B.A., Southeastern Louisiana University; M.L.I.S., Louisiana State University

ANN KEITH NAUMAN, Professor Emerita

B.A., M.A., B.S., M.S., Ph.D., Louisiana State University

ROBERT C. PENICK

B.S., M.B.A., Loyola University of the South; M.Ed., Our Lady of Holy Cross College; M.S., Ph.D., University of New Orleans

DAVID K. SEID, O.P. (Rev.)

B.A., Mississippi State University; M.A. (Counseling Psychology), University of Notre Dame; M.Div., Aquinas Institute of Theology; M.A. (Systematic Theology), Dominican School of Philosophy and Theology

TIMOTHY SILVA

B.A., University of New Orleans; M.A., Louisiana State University

JULIE STRONGSON-ALDAPE

B.A., State University of New York at Oswego; M.A., Ph.D., University of Maryland

JONATHAN WALLIS, S.T.L (Rev.)

B.M.Ed., Texas Christian University; M.Div., M.A., Oblate School of Theology; S.T.L., Pontifical Gregorian University

GREGORY WILLIAMS

B.A., Emory University; M.A., Tulane University

BONNIE B. WOOD

B.A., University of Florida; M.L.S., Louisiana State University

# OVERVIEW

## MISSION STATEMENT

Saint Joseph Seminary College is a community of faith rooted in the Benedictine tradition which promotes learning in the liberal arts and the development of the whole person. The formation program fosters the commitment of seminarians to the Roman Catholic priesthood in accordance with the United States Conference of Catholic Bishops' Program of Priestly Formation. The Seminary College also makes available its educational and other resources to the local community.

## HISTORY AND VISION

Located in a rural setting north of Covington and some forty-five miles from New Orleans, the Seminary College serves primarily the Gulf South region, including east Texas, Louisiana, Arkansas, Mississippi, Alabama, Georgia, Tennessee and the Florida panhandle, while students from other parts of the country are also welcomed. Saint Joseph Seminary College immerses these students in integrated programs of study leading to Bachelor of Arts degrees in Philosophy and the Liberal Arts or Philosophy and Theological Studies, or in a two-year pre-theology program for college graduates. Its curricula introduce students to the major achievements and moral questions of Western Civilization and helps them develop the skills necessary to communicate effectively.

The institution traces its origin to January 1890, when, at the urgent request of Archbishop Francis Janssens, Father Lucas Gruwe arrived with a group of monks from Saint Meinrad Abbey in Indiana to found Saint Joseph Preparatory Seminary for the Ecclesiastical Province of New Orleans, serving the Archdiocese and its suffragan sees. Originally established at Gessen, near Ponchatoula, Louisiana, the college moved to its present site in 1902. In its early years, the school provided both a classical curriculum for seminarians and a commercial course for business students. In 1911, however, Saint Joseph Abbey purchased Dixon Academy in Covington later named St. Paul by the monks in honor of the first Abbot of the Monastery and moved the commercial course there; the Academy later passed to the Brothers of Christian Schools and is now operated as The Saint Paul's School. Like many similar institutions in the country, Saint Joseph Seminary operated, until the middle of the 1960s, as a high school and junior college, and students graduating with its Associate in Arts degree completed their undergraduate program with the philosophical studies requisite for priestly ordination at Notre Dame Seminary in New Orleans. Beginning in 1967, however, the two-year philosophy program was transferred from the sister institution, and in 1969 the Seminary College awarded its first Bachelor of Arts degrees. At roughly the same time, the high school department was phased out.

The Seminary College insists that academic endeavor is more than the sterile accumulation of facts or pragmatic training in techniques. The educational program therefore strives to impart an integrated knowledge and to bring about an intellectual conversion marked by wonder and reverence before God's work in nature, human

history, and redemption. This intellectual conversion and integration forms the human basis for growth in spiritual maturity and integrity.

The Seminary College offers seminarians a community experience of both faith and learning as the setting for this growth. Interaction, service, and the rhythm of daily prayer, together with study, contribute to the development of the whole person. Times of solitude, Morning and Evening Prayer, the daily Eucharist, regular spiritual direction, all afford opportunity for discerning and deepening a vocation to priestly service. The small size of the institution and the warm rapport between students and faculty enhance this educational and formational setting, as does the presence of the resident Benedictine community, with its rich liturgical and cultural tradition, its commitment to the common life and ministry, and its beautiful church building, which is listed on the National Register of Historic Places.

While the core of its academic program remains the college curriculum, Saint Joseph Seminary College has a broader scope. In accord with its purpose of preparing students for graduate theological studies, the seminary has a pre-theology program for those who have already attained the bachelor or a higher degree, but who need formation and grounding in philosophy and other disciplines which the Seminary College affords. The institution also has lengthy experience with foreign-born seminarians, and it has resources for assisting non-native speakers of English with the language skills necessary for college. The Seminary College provides other educational services as well, including programs of preparation for various lay ministries in the Church.

## THE SEMINARY FORMATION PROGRAM

The seminary college follows the guidelines of the Program for Priestly Formation (PPF) as mandated by the United States Catholic Conference of Bishops (USCCB).

“[T]he Seminary should have a precise program of life with one aim which justifies the existence of the Seminary: preparation of future priests.” (Pastores Dabo Vobis, no. 61)

The goal is the development NOT just of a well-rounded person, a prayerful person, or an experienced pastoral practitioner BUT rather one who understands his spiritual development within the context of his call to service in the Church, his human development within the greater context of his call to advance the mission of the Church, his intellectual development as the appropriation of the Church’s teaching and tradition, and his pastoral formation as participation in the active ministry of the Church.

The human, spiritual, intellectual, and pastoral formation are to be read in this unified and integrated sense. They are interrelated aspects of a human response to God’s transforming grace.

Clearly human formation is the foundation for the other three pillars. Spiritual formation informs the other three. Intellectual formation appropriates and understands the other three. Pastoral formation expresses the other three pillars in practice.

“It is both possible and necessary to integrate human formation with the other

formation is linked to spiritual formation by the Incarnate Word and by the fact that grace builds on nature and perfects nature. Human formation is linked to intellectual formation by the cultivation of the human functions of perception, analysis, and judgment. It also contributes to intellectual formation by enabling seminarians to pursue theology as a response to the questions of the human condition. Human formation is finally linked to pastoral formation, which enables a priest to connect with and care for others with his human personality. Conversely, pastoral formation sharpens his human skills and empathic capacities.” (PPF82)

## **STUDENT ACTIVITIES**

### **STUDENT GOVERNMENT ASSOCIATION**

Seminary student life is largely a matter of student-planned and student-directed activities. These are managed by the Executive Board of the Student Government Association (SGA) composed of four officers — President, Vice-President, Secretary, and Treasurer -- elected from the student body at large.

The SGA seeks to achieve its aims through referenda, resolutions, and the appointment of committees for special objectives. Its purposes are to promote good spirit among seminarians; to assure unity among all groups; to promote a spirit of cooperation between the students and faculty; to represent student needs and legitimate requests to the proper authorities; to foster and organize students’ activities under faculty moderators; and to aid the development of creativity and initiative among the students.

Under the Executive Board of the SGA, there are six standing committees: Apostolic, Athletic, Hospitality, Religious Activities, Social Life, and Yearbook. Other committees may be formed as deemed appropriate. There are ad hoc committees which serve at the discretion of the President-Rector and are invited to participate as members of the Student Government Association.

The Seminary College administration and faculty are interested in and supportive of the SGA, seeing its activities as learning and maturing experiences for students through self-regulation.

## **SPECIAL STUDENT PROGRAMS**

### **MISSION IMMERSION PROGRAM**

As the Latin American population continues to grow within the United States, Saint Joseph Seminary College is preparing future priests to cross linguistic and cultural boundaries in order to meet changing needs within the Catholic Church. Seminarians in their final year of formation are required to participate in this program.

Mission immersion programs are centered in two locations – along the Mexico/U.S. border and Guatemala where it is centered in Esquipulas near the Shrine of El Christo Negro, a major Central American pilgrimage destination. This shrine is run by the

monks of Jesus Christ Crucified, a monastery founded by the Benedictine community that runs the Seminary College. This mission experience allows seminarians first-hand opportunities to experience current realities facing the Church in Latin America, particularly in the areas of education, politics, and health care.

Mission Guatemala is an on-going mission project of St. Joseph Seminary College co-directed by Matthew Rousso, a Maryknoll Mission Educator and Promoter and Gregory Boquet, O.S.B., a Benedictine Monk and Rector of St. Joseph Seminary College. Two others from Santa Ana minister with Rousso and Boquet: Maria de Lourdes Villeda assists in program coordination and Crescencio Morales works in the garden project as master gardener.

During the fall semester, the seminarians discuss various topics pertinent to preparing them for this immersion which takes place during the Christmas break. Upon their return, sessions are devoted to discussing and reflecting upon that experience culminating in a presentation given to the seminary community at the end of the semester. The focal point of this program is to expand the pastoral vision of those being recommended for ongoing studies at the theologate level.

#### **ABBAY YOUTH FESTIVAL**

Established in 2001, the Abbey Youth Festival is an apostolic outreach of Saint Joseph Abbey and Seminary College. It is designed to provide young people with an opportunity to experience a day of prayer and faith formation with an exposure to the Benedictine tradition. Its focus is evangelization and vocational discernment by means of liturgy, prayer, worship, music, and education appropriate for Catholic young people.

Teams of six to eight SJSJ seminarians are selected annually to assume the tasks associated with planning the festival. Students are led by the AYF Director, a seminary college staff member, to discern the theme, speakers, presenters, logo, and direction of the event each year. Further, they work alongside the Director to complete all necessary logistical tasks. Valuable lessons of leadership, teamwork, youth ministry, and collaboration are deepened through participation on the AYF team. By emphasizing the four pillars of formation throughout the planning process, seminarians are able to enter into this work as an authentic apostolic outreach.

#### **ENGLISH AS A SECOND LANGUAGE (ESL) PROGRAM**

Saint Joseph Seminary College offers a full-time ESL program, welcoming non-English speakers of all ability levels. The program provides one-on-one instruction, small-group instruction and special computer-assisted learning programs. ESL students also participate in formation classes with their English-speaking peers, giving them increased opportunities to practice their new language and to integrate with the whole of the seminary community.

## ROUQUETTE LIBRARY

The Rouquette Library honors Adrien Emmanuel Rouquette, 1833-1887, the first native of Louisiana to become a diocesan priest. Not only was Père Rouquette published in English and French, he was also published in the language of the Choctaw Indians whom he evangelized in Saint Tammany Parish. The library supports and enhances both the academic and formation programs of Saint Joseph Seminary College by providing resources and services necessary to meet the educational needs described in the Seminary College's mission statement.

A full array of information resources and services is provided in support of the college's liberal arts program, including more than 31,000 volumes of print books, hundreds of different types of media and over 5,400 volumes of bound print serials. In addition, the library subscribes individually and through a variety of consortial arrangements to hundreds of electronic databases that provide access to hundreds of thousands of full-text journal titles and eBooks, all covering the spectrum of curricular subjects that are taught at the college. Access to electronic collections is available to current students and faculty through the library's web pages. While the library's print and non-print collections support all areas related to the college's academic and formation programs, there are noteworthy holdings in philosophy, literature, art and theology.

The library's resources, regardless of format, are discoverable through the library's web pages at <[lib.sjasc.edu](http://lib.sjasc.edu)>. Access to library resource collections and services is available in the physical facility during designated hours that vary according to the patterns of the academic calendar. A staffing schedule for the library is posted throughout the library building every Friday. During academic semesters, the library facility is accessible to students and faculty through electronic key fob seven days a week from 8:00 am- 10:00 pm. The library's Information Commons provides full Internet access, word-processing and printing. Nearby are study tables for individuals and groups, along with couches and chairs for reading in a comfortable setting. An audio room and a video room provide additional space for individuals or small groups.

The library works with faculty and students to develop its collections and to provide the best in user-centered services. Current students and faculty have full borrowing privileges. Faculty and students with a LALINC card have borrowing privileges as per the LOUIS reciprocal borrowing agreement. The library's print collections and electronic resources are available to scholars and the interested public through arrangements with the Director of the Library.

## GENERAL INFORMATION

### ACCREDITATION

Saint Joseph Seminary College is accredited by the Southern Association of Colleges and Schools Commission on Colleges to award the Bachelor of Arts Degree. Contact the Commission on Colleges at 1866 Southern Lane, Decatur, Georgia 30003-4097 or call

404-679-4500 for questions about the accreditation of Saint Joseph Seminary College. The Seminary College course of training also fulfills the requirements of ecclesiastical norms and offers a major in Philosophy and the Liberal Arts or in Philosophy and Theological Studies.

## **ACADEMIC MEMBERSHIP**

To maintain professional standards and to provide certain academic opportunities for its administrative and teaching personnel, Saint Joseph Seminary College holds active membership in the National Catholic Educational Association and the Louisiana Association of Independent Colleges and Universities. Individual faculty members hold membership in their respective professional and learned societies.

## **ADMINISTRATION AND OWNERSHIP**

The Archbishop of New Orleans, Bishops of the Provinces of New Orleans and Mobile, together with the Abbot of Saint Joseph Abbey and selected priests and laypersons of the area, serve as the Board of Trustees and administer Saint Joseph Seminary College. Saint Joseph Abbey maintains ownership of the buildings, facilities and properties of the Seminary College. The administration of the Seminary College - fiscal, academic, and formative - is under this Board of Trustees. The President-Rector of the Seminary College is appointed by the Board of Trustees and acts as Secretary to the Board.

## **FINANCIAL INFORMATION**

Costs are available on-line at <http://www.sjasc.edu/admissions-tuition.php>.

## **REFUND POLICY**

Fees other than tuition, room, and board are not refundable. Refunds for students who do not receive federal aid and withdraw during:

- First Week: 80% refund
- Second Week: 60% refund
- Third Week: 40% refund
- Fourth Week: 20% refund
- Thereafter: No refund

For federal financial aid recipients, priority of refund distribution is as follows:

1. Unsubsidized Direct Loan
2. Subsidized Direct Loan
3. Direct PLUS Loan (Graduate)
4. Direct PLUS Loan (Parent)
5. Federal Pell Grant for which a Return is required
6. Iraq and Afghanistan Service Grant for which a Return is required
7. Federal Supplemental Educational Opportunity Grant (SEOG)

8. Other Title IV Assistance
9. Other State Tuition Assistance Grants, Private, Institutional Aid Programs
10. The Student

Refunds for students who receive federal financial aid are computed on a pro-rata basis in accordance with the number of days remaining in the enrollment period and must conform to federal regulations. Because this involves a number of variables, the Director of Financial Aid should be consulted for more details and sample calculations.

## FINANCIAL AID

The Office of Financial Aid is located in the administrative area of Christ Court. To apply for financial aid, a student must complete a Free Application for Federal Student Aid (FAFSA) and indicate that the results are to be sent to Saint Joseph Seminary College, federal school code 002027. This should be done no later than 1 May in any year, as the college begins reviewing awards on 1 July.

Most of the financial aid offered by Saint Joseph Seminary College involves federal funding such as Federal Pell Grants and Federal Direct Loans. The need for such assistance is dependent upon the results of the information submitted on the FAFSA.

For more detailed information about eligibility, programs, and how aid is awarded, contact: contact:

Office of Financial Aid  
Saint Joseph Seminary College  
75376 River Road  
Saint Benedict, LA 70457  
Phone: 985.867.2273

In addition to financial aid offered through Saint Joseph Seminary College, dioceses that sponsor students frequently assist those students in meeting their educational costs. The Vocation Director of a student's diocese should be consulted for such information.

## VETERANS

Courses offered by Saint Joseph Seminary College are approved for the payment of veterans' benefits. Veterans must consult the Director of Financial Aid concerning these regulations.

## SPECIAL ENROLLMENT PROGRAMS

Because of Saint Joseph Seminary College's close relationship with the surrounding population, the following programs and opportunities for persons in the community are offered:



## SENIOR SCHOLARS PROGRAM

Persons age 55 and older may audit courses for their own enrichment without receiving any credit or certificate for a cost of \$50.00 per course plus a \$10.00 registration fee, which allows them to have a record of their audits and access to Rouquette Library.

## COURSES FOR AUDIT

Persons age 54 and younger who wish to audit courses for their own enrichment are charged \$60.00 per course plus a \$10.00 registration fee, which allows them to have a record of their audits and access to Rouquette Library.

## ADMISSION POLICY

This Admission Policy is used to define the enrollment requirements for individuals who wish to enroll at Saint Joseph Seminary College as a regular student. Saint Joseph Seminary College must adhere to the U.S. Department of Education, Southern Association of Colleges and Schools Commission on Colleges and Louisiana State Board of Regents guidelines.

## GENERAL ADMISSIONS INFORMATION

**APPLICATION FOR ADMISSION** – All applicants must provide the following:

1. Completed application form;
2. By Louisiana law, all new students must provide certification that they have been immunized or provide proof of immunity for mumps, measles, rubella, tetanus, meningitis, and diphtheria.
3. Provide proof of high school completion (this can be a foreign school if it is equivalent to a U. S. high school diploma) or the recognized equivalent of a high school diploma, such as a general education development (GED) certificate; or completion of homeschooling at the secondary level as defined by state law; or completion of secondary school education in a homeschool setting which qualifies for an exemption from compulsory attendance requirements under state law, if state law does not require a homeschooled student to receive a credential for their education.
4. An official college transcript showing completion of an academic program (two year or four year) from an accredited institution may also be accepted in lieu of high school graduation to fulfill this requirement.
5. Official score report(s) from American College Testing (ACT), Scholastic Aptitude Test (SAT), or Texas Higher Education Assessment (THEA);
6. Veterans record, if applicable;
7. Foreign student records, if applicable;
8. Student financial aid records, if applicable.

Note: Online (internet) High school, GED and home school diploma mills are not acceptable as proof of appropriate education.

### **Diploma mill definition**

An entity that:

1. Charges someone a fee and requires him to complete little or no education or coursework to obtain a degree, diploma, or certificate that may be used to represent to the general public that he has completed a program of secondary or postsecondary education or training; and
2. Lacks accreditation by an agency or association that is recognized as an accrediting body for institutions of higher education by the Secretary (pursuant to Part H, Subpart 2 of Title IV) or a federal agency, state government, or other organization that recognizes accrediting agencies or associations.

### **ENROLLMENT - Full-time Resident Students**

The full-time resident student is a Roman Catholic male who intends to prepare for the celibate priesthood by participation in the seminary program. Once admitted to the Seminary College, the applicant for full-time resident status must provide:

1. A recent photograph;
2. Completed medical form to be sent directly to Director of Student Health;
3. Requirements of Canon Law (see Canon 241) must be observed if the applicant has attended another seminary or been a member of a religious community. The applicant will request a letter be sent from the Rector/Superior of the previous seminary/religious community to the President-Rector of Saint Joseph Seminary College indicating that the applicant left the seminary/religious community in good standing;
4. Criminal Background Check conducted through one's diocese or the seminary;
5. Valid psychological evaluation
6. Letter of sponsorship from diocese or religious community. By the statement of sponsorship, the seminary will presuppose that the following have been acquired by the diocese or religious community:
  - a. Recent (obtained within the last six months) certificate of Baptism and certificate of Confirmation.
  - b. Assurance that the applicant is suitable for admission to seminary in accord with the norms of Canon Law (see Canon 241).

### **MATRICULATION REQUIREMENTS - Full-time Resident Students**

Candidates for the freshman year and transfer students must present evidence of graduation from an approved secondary school and proof of ability to follow the curriculum of the Seminary College by satisfying the following criteria:

A. Completion of approved pre-college curriculum, as certified by an official transcript. A preferred record includes success in a minimum of seventeen academic units of high school credit, normally including at least:

- |                             |                                 |
|-----------------------------|---------------------------------|
| 3 units of English          | 2 units of Science              |
| 2 units of Mathematics      | 1 unit of United States History |
| 2 units of Foreign Language |                                 |

Applicants who do not have these units may be required to take certain developmental courses in order to be able to participate in the Seminary College curriculum.

B. Presentation of American College Test (ACT) results. The Admissions Committee reviews these scores together with an analysis of the applicant's high school record. The Saint Joseph Seminary College ACT identification number is 1604.

C. In addition to the above, applicants for whom English is a second language must show proficiency in English adequate for college level study. Non-native English speakers will be tested upon arrival to determine their levels of proficiency in English. In cases where the TOEFL is used, the Saint Joseph Seminary College identification number is 6689.

D. Transfer students who are eligible to enroll in the program of study leading to a B.A. in Philosophy and Theological Studies should see page 30 for admission requirements.

## **ENROLLMENT - Non-resident Students**

Non-resident (non-seminarian) students may seek admission to Saint Joseph Seminary College as full-time or part-time students. In addition to the General Admission requirements listed above, the part-time student will be required to complete the following in order to satisfy the admissions process and be properly enrolled:

1. A recent photograph;
2. A completed Emergency Contact Information Form;
3. If taking courses for credit, applicants must submit official copies of high school transcripts or equivalent and official copies of transcripts of all work done at postsecondary institutions
4. Applicants wishing to take college courses without meeting the full requirements for admission may apply for special student or non-credential status. Previous academic records are not required.
5. Veterans records as applicable.

### **Transfer Students**

All hours attempted will count toward the Title IV, HEA funding 150% quantitative requirements not just the hours that were accepted as transfer hours. (See Financial Aid Section for Complete Details)

## RE-ADMISSION POLICY

A student who left the Seminary College in good academic standing will be considered for readmission upon completion of re-application procedures (see below) and subject to review of academic and formational records by the Admissions Committee.

## RE-ADMISSION PROCEDURE

The applicant for re-admission as a full-time resident student will:

1. Complete a new application form;
2. Submit official transcripts for any academic work taken in the interim.

The Admissions Committee will review all records of previous enrollment and may request a personal interview with the applicant before deciding to re-admit the student or to deny his application. The decision of the Admissions Committee is final.

## RE-ENROLLMENT - Full-Time Resident Seminarian

The prospective re-enrollee will submit:

1. A letter to include:
  - a. Reason for return;
  - b. What changes have made a return viable;
  - c. Reason why re-enrollment should be considered by the Seminary College;
2. A current letter of sponsorship from diocese or religious community. By the statement of sponsorship, the seminary will presuppose that the following have been acquired by the diocese or religious community:
  - a. Recent (obtained within the last six months) certificate of Baptism and certificate of Confirmation;
  - b. Assurance that the applicant is suitable for enrollment to seminary in accord with the norms of Canon Law (Canon 241).

## FINANCIAL AID INFORMATION FOR PROSPECTIVE STUDENTS

### General Information for Financial Aid

The Office of Financial Aid at Saint Joseph Seminary College administers and coordinates student financial aid from federal, state, institutional and private sources. Resources are available to supplement what a student and/or the student's family is able to contribute to educational costs. The goal of the Office of Financial Aid is to attempt to meet the documented financial need, within funding limitations, for all students who have completed the required application processes.

Saint Joseph Seminary College participates in Federal Title IV, Higher Education Act (HEA) programs including grants and loans. Counseling is also available for new and returning students to assist them with understanding cost of attendance, financial aid opportunities, money management, and packaging procedures.

Students enrolled in a distributed learning program or course and wishes to receive financial aid and/or scholarships, must adhere to the same guidelines as those enrolled in traditional on-campus programs as presented in this Bulletin.

All hours attempted will count toward the Title IV, HEA funding 150% quantitative requirements.

The information stated below is for all prospective students and currently enrolled students of Saint Joseph Seminary College.

### **Financial Aid Contact Information**

The Office of Student Financial Aid is located in the administrative area of Christ Court.

Address: 75376 River Road, St. Benedict, Louisiana 70457

Email: [financialaid@sjasc.edu](mailto:financialaid@sjasc.edu)

Phone: 985-867-2273

Office Hours: Monday - Friday 8:00 a.m. - 4:00 p.m.\*

\* Hours vary in rare circumstances.

### **Free Application for Federal Student Aid**

The Free Application for Federal Student Aid (FAFSA) is a need analysis form a student must complete in order to determine eligibility for federal, state, and some institutional aid. Specifically, it is the application for federal grants, loans, and student employment programs. The FAFSA collects income, asset, and household information about the student and their family (if applicable) to determine the student's Expected Family Contribution (EFC). The EFC is an estimate of the amount the student and/or the student's family can contribute to the student's education for an academic year. The EFC is used by SJSC College to determine the student's financial need, which is an indicator for the types of aid the student is eligible to receive.

### **Veterans Affairs (VA)**

Students who are eligible for financial assistance from the U. S. Department of Veterans Affairs should notify the admissions office of their intention to register. The Financial Aid Office will assist veterans with certification procedures. Veterans are required by the VA to maintain satisfactory academic progress in pursuit of their educational program and to meet attendance requirements. The school works with the Veterans Affairs (VA) office; however, the determination for VA funds are made directly through the VA.

V. A. Regional Office (351)  
125 S. Main Street  
Attention CH33 TIN EFT  
Muskogee OK 74402-8888

## FACILITIES/ACCOMMODATIONS FOR STUDENTS WITH PHYSICAL AND LEARNING DISABILITIES

The school complies with the Americans with Disabilities Act of 1990 and is wheelchair accessible. The school will provide reasonable modifications and/or accommodations for students with disabilities depending on the student's need.

If a potential applicant to Saint Joseph Seminary College is in need of accommodations, they should schedule an appointment with the Dean of Students. At this meeting, they will discuss the nature of the reported disability and its impact on learning. They will also discuss the process of receiving reasonable accommodations at Saint Joseph Seminary College, and the types of accommodations available. Copies of current documentation of a disability shall be brought to this meeting. Documentation must be provided by a medical expert within the last three years and include:

- a diagnosis of the disability;
- how the diagnosis was determined (what tests were given and the results);  
and
- A clinical summary, which includes an assessment of how the disability will impact the individual in a college environment and what accommodations are recommended.

Upon completion of the initial meeting, the Dean of Students will notify the Academic Dean and relevant faculty members in writing of the accommodations which will be offered to the student. Such communication will be made confidentially.

## QUALITY ENHANCEMENT PLAN (QEP) O SOPHIA, IMPROVING WRITING SKILLS IN PHILOSOPHY

In 2013 Saint Joseph Seminary College instituted its first Quality Enhancement Plan (QEP): O Sophia, Improving Writing Skills in Philosophy. After examination of the articulated needs of the faculty and student body and review of current literature of the best practices in academic writing, three objectives were established: (I.) Promote student engagement in process writing for production of papers in philosophy, (II.) enable students to appropriately express philosophical ideas in writing by means of thesis, argumentation, and logic, and (III.) enable students to evaluate the credibility of philosophical sources and accurately document these sources.

The instructional design of the QEP is a collaborative model, across the curriculum between the literature, library, and philosophy faculties in a team approach, enabling each faculty member to teach within his/her area of expertise. Instruction in writing and research skills will take place primarily in a central "gateway" course to the philosophy program and the QEP. The skills acquired in the gateway course will be reinforced by three other QEP contact courses in philosophy, one in each subsequent semester after the gateway course, whereby students will receive instruction and guidance to continuously improve their writing skills as their academic careers progress.

# ACADEMIC INFORMATION

## GENERAL EDUCATION REQUIREMENTS

The Louisiana Board of Regents has established Statewide General Education Requirements which are found in Board of Regents Academic Affairs Policy 2.16; Statewide General Education Requirements. The goals of the Statewide General Education Requirements are that the undergraduate completer shall attain appropriate competencies in the following areas: oral and written communication, reading, abstract reasoning and critical thinking, mathematics, the scientific method, informational applications, cultural diversity, and the fine and performing arts. St. Joseph Seminary College provides a common general education core curriculum which:

1. Assures proficiency in basic English skills so that students are able to communicate effectively in both writing and speech.
2. Assures proficiency in mathematics so that students are able to understand and use numerical data appropriate to their chosen career field.
3. Develops scientific literacy and an understanding of the scientific method.
4. Fosters those habits necessary to learn independently.
5. Develops an awareness of the great ideas, issues, and questions of world cultures.
6. Exposes students to the history and nature of the fine and performing arts.

All baccalaureate degrees include minimum general education requirements. General education requirements for the Bachelor of Arts in Philosophy and the Liberal Arts are listed below. General Education requirements for the Bachelor of Arts in Philosophy and Theological Studies are described in “Special Admission Requirements” on page 30.

English composition.....	6 hours	Mathematics .....	3 hours
Fine Arts .....	3 hours	Natural Science .....	6 hours
History .....	6 hours	Philosophy .....	9 hours
Foreign Language .....	6 hours	Psychology .....	3 hours
Literature .....	3 hours	Theology .....	6 hours

## CLASSIFICATION OF STUDENTS

A full-time, resident student is one who carries a minimum of 12 semester hours of course work. A part-time student is one who carries fewer than 12 semester hours of course work. A freshman student is one who has earned fewer than 30 semester hours of accepted credit; a sophomore student is one who has earned between 30 and 59 semester hours toward the B.A. and has completed English Composition II or the equivalent. Juniors have earned at least 60 semester hours toward the B.A. and seniors have earned at least 90 hours toward the B.A.

## ACADEMIC HONESTY

The seminary college is a community dedicated to learning and research, both of which include the transmission of knowledge. In striving to learn, we are often dependent on what others have achieved and thus become indebted to them. Courtesy, gratitude, and justice require that we make public our reliance on and use of the ideas and writings of others.

I. Plagiarism is an attempt to claim ideas or writings that originate with others as one's own. Plagiarism is a violation of intellectual property rights. This is not mitigated by paraphrase or even by extensive rewriting. Whenever ideas or words have been borrowed, the student must give credit; in formal papers, this is normally done by citing the source in an accepted form. The same principle of honesty applies to information available through modern technologies; sources must be accurately credited.

II. Cheating, on tests or quizzes, can take the form of copying from another's paper or making use of materials - whether printed, digital or in the form of student notes - not permitted by the instructor. It must be assumed that all the work turned in by a student is the student's own work.

### III. Disciplinary Action Regarding Plagiarism or Cheating

A student who is guilty of cheating or plagiarism is subject to disciplinary action. He immediately receives a failing grade on the work.

An instructor who suspects that a student has been guilty of academic dishonesty must immediately confront the student and inform the Academic Dean. The instructor must then compile the materials of the case in question including as applicable the piece of work involved, any sources from which the student may have plagiarized or cheated, and a report of the incident and of the instructor's conversation with the student. The instructor will then submit the documentation to the academic dean.

Once the material is reviewed, the Academic Dean may decide upon a penalty beyond the instructor's grade which may result in a failing grade for the course.

The Academic Dean informs the Vice Rector of this infraction. After reviewing the material, the Vice Rector will make a determination if the Discipline Committee will need to be convened.

## THE DISCIPLINE COMMITTEE

In particular cases, the Discipline Committee may be summoned to consider actions. The committee consists of the Vice Rector (chair), Dean of Students, Academic Dean, the respective seminarian's Formation Advisor, and, ex-officio, the President-Rector.

Because matters needing attention may come to the notice of the committee from a variety of sources, the general and ordinary procedure for handling matters by this committee is as follows:

1. Once a seminarian is reported as not engaging in the seminary program responsibly, as having some difficulty that needs committee attention, or as having committed some serious misconduct or dishonesty, the committee meets and reviews the student's performance under the seminary program, perhaps even calling him



to answer points made. After this review, one of the following recommendations is in order:

- A. no action;
  - B. the student is advised to seek private assistance with his problem;
  - C. the student is officially required to obtain counseling;
  - D. the student is given a disciplinary/formational warning: official notification that serious issues must be addressed immediately; failure to address these issues subjects the seminarian to further disciplinary action;
  - E. the student is placed on disciplinary probation: official notification that specific conditions must be strictly observed; failure to address these issues subjects the seminarian to suspension or dismissal;
  - F. the student is placed on disciplinary suspension: official notification that the seminarian is to withdraw from the seminary at a specific time for a specified period.
  - G. the students is advised to discontinue from the seminary: official notification that a seminarian is formally dismissed from the seminary; this may preclude re-admittance to Saint Joseph Seminary College.
  - H. the student is immediately dismissed and expelled from the seminary.
2. Notice of the action of the committee in each case:
- A. is recorded in the student's records;
  - B. is sent to the student's vocation director.
3. In all instances, the norms of the USCCB governing the re-admittance of those dismissed from formation programs will be followed.

## GRADING SYSTEM

Saint Joseph Seminary College uses a 10-point grading system. The grades A, A-, B+, B, B-, C+, C, and C- are given for satisfactory work. The grades of A (100-94), A- (93-90), B+ (89-88), B (87-84), and B- (83-80) are given for work of high degrees of excellence. The grades of C+ (79-78), C (77-74), and C- (73-70) indicate work of a quality acceptable for graduation. The grades of D+ (69-68), D (67-64), and D- (63-60) are passing but unsatisfactory.

The grade of F (below 60) is given for work failed. After the latest date for dropping courses each semester, as indicated in the calendar, a student who officially drops a course while doing passing work receives the grade of WP (Withdrawn Passing); a student doing unsatisfactory work receives the grade of WF (Withdrawn Failing). A student who fails a course due to excessive absence receives the grade of FA (Failure Due to Absence). A student who must withdraw from courses due to documented medical reasons will receive the grade of WM (Withdrawn Medical).

Some courses may award grades of P (Passing) or F (Failure).

The grades of P, WP, and WM are not used in the computation of the grade point average. The grades F, WF, and FA are used in the computation of the semester and cumulative grade point averages.

The grade of “I” (Incomplete) is given when the student’s work to date in the course is of passing quality and the student has satisfactorily completed substantially all of the course requirements; but, due to circumstances beyond the student’s control, an exam or other course requirement is missing. The deficiency must be met by the day of registration of the next regular semester or, in the spring, four (4) weeks after the end of the term unless extended by the Academic Dean. “I” grades are removed only by completion and submission of the course work, not by repeating the course. The “I” grade is computed as F until changed to a final grade. “I” grades that are not resolved by the deadline will be changed to a grade of F at the conclusion of registration or four weeks after the end of the spring term.

## **QUALITY POINTS AND ACADEMIC HONORS**

The quality of work is indicated by quality points. A grade of A carries four quality points per semester hour; a grade of B carries three quality points; a grade of C carries two quality points; a grade of D carries one quality point. The semester grade point average is computed on the basis of the total number of hours attempted during the semester. Grades of those courses for which semester hours are earned, and F and WF grades, are included in the computation of the cumulative grade point average.

Students with an average of 3.5 to 3.6 graduate cum laude.

Students with an average of 3.7 to 3.8 graduate magna cum laude

Students with an average of 3.9 to 4.0 graduate summa cum laude

## **DEAN’S LIST**

Each semester, those full-time students whose quality points average 3.5, or above are placed on the Dean’s List. Students with a grade of D or F cannot be considered for the Dean’s list, although they may have attained a B-plus average. Placement on the Dean’s List is noted on the students’ grade report and permanent record.

## **ATTENDANCE AND WITHDRAWAL**

College regulations require students to attend all classes. Withdrawal from courses is by formal application to the Academic Office; failure to attend classes does not constitute withdrawal and may make students subject to the grade of FA (Failure Due to Absence).

## **ACADEMIC PROBATION AND SUSPENSION**

The maintenance of a C average, i.e. a grade point average of 2.0, is necessary for obtaining an academic degree from Saint Joseph Seminary College. Students whose semester average is below 2.0 will be placed on academic probation for the following semester. Freshman and transfer students will not be placed on probation for their first semester unless their grade point average is below 1.75. Probationary status will be extended beyond one semester only if progress is being made toward the attainment of the required grade point average. Failure to remedy the deficiency may result in the

Academic Affairs Committee recommending the student's suspension for a semester, at the end of which he or she may reapply for admission to Saint Joseph Seminary College and be readmitted on academic probation. Students may appeal the decision to the President-Rector. The appeal process is on the college's Intranet site. Placement or retention on and removal from probation and suspension are noted on the student's transcript. Students attempting 6-11 semester hours will be subject to the same probation or suspension rules as listed above.

## **TRANSFER OF CREDITS**

Transfer credit will be based on a review of official transcripts from all institutions of higher education previously attended. Credits earned at other regionally accredited colleges or universities will be honored by Saint Joseph Seminary College for those courses in which a grade of C or above has been achieved and which are applicable toward its degree programs. Credits earned at Roman Catholic seminaries abroad will be honored by Saint Joseph Seminary College for those courses in which a grade of C or above has been achieved, as interpreted by transcript evaluation, and which are applicable toward its degree programs. Transferred credits carrying numerical grades will be interpreted according to the grading system in use at Saint Joseph Seminary College.

Students with international credit will be required to have their transcripts evaluated by a verified credential evaluation service. These transcripts must receive a course by course evaluation, with the cost for this evaluation borne by the student. A listing of verified credential evaluation services may be found at [www.naces.org/members.htm](http://www.naces.org/members.htm).

Students transferring to Saint Joseph Seminary College in good standing with their prior institutions will be considered in good standing with the Seminary College during their first semester. Students transferring in probationary status from a prior institution will be subject to the academic probation and suspension policies of Saint Joseph Seminary College and may be required to carry a limited schedule of courses during their first year of enrollment.

All transfer students will receive notification, in writing, of credits accepted from other institutions no later than the end of their first semester at the Seminary College.

## **CREDIT AND PLACEMENT BY EXAMINATION**

Saint Joseph Seminary College participates in the College Level Examination Program (CLEP) of the College Board and awards credit and/or placement for the subject examinations sponsored by this program. The minimum score for all CLEP examinations for which credit will be granted is 50. The total number of combined credit hours a student may earn from CLEP examinations and advanced standing examinations (see below) is 24. Credit will be awarded only for CLEP examinations taken before or during a student's first semester of enrollment at the Seminary College. The Saint Joseph Seminary College CLEP identification number is 6689. The following chart shows the CLEP examinations for which the Seminary College awards credit:

<b>CLEP Examination</b>	<b>SJSC course for which credit is awarded</b>	<b>Hours Awarded</b>
College Composition	ENG 1311/1312 English Composition I and II	3/6 *
College Composition	ENG 1311/1312 English Composition I and II	3/6 *
Analyzing and Interpreting Literature	LIT 2312 Introduction to Literature	3
French Language	Elective or LAT 1311	3
German Language	Elective or LAT 1311	3
Spanish Language	Elective or LAT 1311	3
College Mathematics	MAT 1311 Practical Mathematics	3
Biology	SCI 1311 Human Biology	3
Natural Sciences	SCI 1312 Environmental Sciences	3

\*The credit awarded for these exams is affected by the score achieved on the Diagnostic Essay taken by all incoming students (see below). For a score of 1 or 2, no CLEP credit is awarded. For a score of 3, CLEP credit is given for ENG 1311. For a score of 4, 5, or 6, CLEP credit is given for ENG 1311 and ENG 1312.

Students of superior ability and preparation, and students who have gained a fundamental knowledge of subjects offered at the college, may be permitted to take advanced standing examinations in specific courses which, if passed with satisfactory grades, will enable the students to receive degree credit and to advance to higher level courses. A student may take such an examination only once for each course. Credit given by examination is not used in the computation of the grade point average.

Advanced placement scores of 3 or higher may receive credit for the equivalent course. Students will receive the grade of "P" and 3 credit hours for credit earned through advanced placement scores.

All CLEP/Advanced Standing/AP credit is awarded at the discretion of the Academic Dean.

All incoming students - freshmen and transfer students - take an institutional English essay examination (the Diagnostic Essay) and have their ACT, SAT, or THEA scores examined to determine the level at which the students are functioning in academic written English. Based on the results of these measures, students may be placed in developmental English or assigned to tutorial sessions in the Writing Center. Credit is awarded for performance on the Diagnostic Essay as follows:

<b>Diagnostic Essay Score</b>	<b>Credit awarded for</b>
1,2,3,4	none
5	ENG 1311 English Composition I
6	ENG 1311 English Composition I and ENG 1312 English Composition II

## TRANSCRIPTS

Anyone who has attended Saint Joseph Seminary College, and who is not in arrears with financial obligation to the college, may obtain a certified statement of work completed. A fee of \$8.00 is charged for each official copy. Transcripts requiring special handling are subject to additional fees. Upon written request from the student, transcripts will be sent directly to a designated school or organization. Unofficial transcripts may be obtained for a fee of \$5.00 each.

## RELEASE OF STUDENT INFORMATION

Saint Joseph Seminary College complies with the provisions of the Family Educational Rights and Privacy Act of 1974 (Buckley Amendment). The Seminary College ensures students access to their official academic and disciplinary records and prohibits release of personally identifiable information, other than directory information, from these records without their written permission except as specified by law. Access to these records is restricted to the student concerned, to officials within the Seminary College, to a court of competent jurisdiction, and otherwise pursuant to law.

Directory information includes: name, address, telephone number, date and place of birth, major field of study (if applicable), participation in activities, dates of attendance at the college, classification, degrees, honors and awards received, educational institutions attended, social security number (for record keeping and reporting of grades), and indication to recognized Student Government Association committees or other campus organizations that a student's grade point average is sufficient for SGA posts and committees or organizational participation.

## PROGRAMS OF STUDY

### BACHELOR OF ARTS IN PHILOSOPHY AND THE LIBERAL ARTS (CIP 38.0001)

#### DEGREE REQUIREMENTS

1. One hundred twenty-six (126) credit hours, which must include a minimum of 33 credit hours in philosophy, 18 credit hours in theology, 15 credit hours in history, 15 credit hours in literature, 9 credit hours in psychology, 6 credit hours in English composition, 6 credit hours in the fine arts, 6 credit hours in the natural sciences, 6 credit hours in a foreign language, 3 credit hours in mathematics, and 3 credit hours in public speaking. These required hours are fulfilled by the courses specified below, or by those approved by the Academic Dean.
2. Forty-five (45) of the credit hours must be from upper-division courses.
3. Ordinarily, the last 30 credit hours must be in residence at Saint Joseph Seminary College.
4. The foreign language requirement is to be satisfied by the study of Latin. By exception, the Academic Dean may substitute another foreign language.
5. In accord with the United States Conference of Catholic Bishops' Program of Priestly Formation, the Philosophy requirements are to include the study of the history of philosophy, logic, epistemology, philosophy of nature, metaphysics, natural theology, philosophical anthropology, and ethics.
6. Maintenance of a cumulative C average in the courses applicable toward the degree and in Philosophy courses.

7. Any student seeking a degree from Saint Joseph Seminary College is required to be a full-time student, taking a minimum of 12 semester hours each semester of enrollment. Courses required by Saint Joseph Seminary College and taken at another college will not be accepted for transfer credit unless previously approved as such by the Academic Dean.
8. Payment of the graduation fee and presence at the graduation exercises are required of all who receive a degree.

## COURSE OF STUDY

### FRESHMAN YEAR

FALL SEMESTER	CREDIT
ENG 1311 English Composition I	3
MAT 1311 Practical Mathematics	3
RES 0091 Becoming a Master Student	1 *
SCI 1311 Human Biology	3
HIS 1311 History of Western Civilization	3
THE 1311 Introduction to Catholicism	3
	15

\*Hour earned for RES0091 does not count toward degree requirements and therefore is not computed in the total hours listed for this course of study.

SPRING SEMESTER	CREDIT
ENG 1312 English Composition II	3
SCI 1312 Environmental Science	3
ART 1312 Art History	3
HIS 1312 U.S. History	3
ENG 1322 Introduction to Public Speaking	3
	15

### SOPHOMORE YEAR

FALL SEMESTER	CREDIT
MUS 2311 Classical Music	3
PHI 3321 Logic	3
PSY 2311 Introduction to Psychology	3
THE 2311 Old Testament	3
LAT 1311 Basic Latin I	3
	15

SPRING SEMESTER	CREDIT
LIT 2312 Major American Writers	3
PHI 3311 Introduction to Philosophy and Philosophical Research	3
PSY 2312 Social Psychology	3
LAT 1312 Basic Latin II	3
THE 2312 New Testament	3
	15

## JUNIOR YEAR

<b>FALL SEMESTER: THE ANCIENT WORLD</b>	<b>CREDIT</b>
HIS 3311 Graeco-Roman Civilization	3
LIT 3311 World Literature I	3
PHI 3331 Ancient Philosophy	3
PHI 3341 Ethics	3
Elective or Language	3
	15

<b>SPRING SEMESTER: THE MEDIEVAL WORLD</b>	<b>CREDIT</b>
HIS 3312 Medieval History	3
LIT 3312 World Literature II	3
PHI 3312 Medieval Philosophy	3
PHI 3322 Metaphysics	3
THE 3312 Life in Christ	3
Elective or Foreign Language	3
	18

## SENIOR YEAR

<b>FALL SEMESTER: THE MODERN WORLD</b>	<b>CREDIT</b>
HIS 4311 Renaissance History	3
LIT 4311 World Literature III	3
PHI 4311 Modern Philosophy	3
PHI 4321 Epistemology	3
THE 4311 Liturgical and Personal Prayer	3
PSY 4311 Sexuality and Relationships	3
	18

<b>SPRING SEMESTER: THE CONTEMPORARY WORLD</b>	<b>CREDIT</b>
LIT 4312 World Literature IV	3
PHI 4312 Contemporary Philosophy	3
PHI 4322 Philosophical Anthropology	3
PHI 4332 Natural Theology	3
THE 4312 Fundamental Theology	3
	15
Total Credit Hours	126

## **BACHELOR OF ARTS IN PHILOSOPHY AND THEOLOGICAL STUDIES (CIP 38.0203)**

The Bachelor of Arts in Philosophy and Theological Studies degree is designed specifically for those students who have earned at least 60 credit hours at another college or university and wish to transfer to Saint Joseph Seminary College.

## SPECIAL ADMISSION REQUIREMENTS

1. A student who enters the curriculum leading to the Bachelor of Arts in Philosophy and the Liberal Arts at Saint Joseph Seminary College would not, at any time, become eligible to enter the program leading to the Bachelor of Arts in Philosophy and Theological Studies.
2. Students will be eligible for this program if they have completed 60 or more credit hours of transferable higher education credit.
3. Twenty-seven (27) of the 60 hours must include hours within the following parameters: 6-9 credit hours in English composition or equivalent, 3-9 credit hours in science, 3-6 credit hours in math, 3-9 credit hours literature, 3-9 credit hours in history, and 2-6 credit hours in fine arts.
4. Students must have maintained a minimum cumulative 2.5 GPA.
5. Students who enter this program already having earned a B.A. or B.S. may earn this B.A. as well.

## DEGREE REQUIREMENTS

1. One hundred twenty-six (126) credit hours, which must include a minimum of 33 credit hours in philosophy, 18 credit hours in theology, 6 credit hours in English composition, 6 credit hours in a foreign language, 3 credit hours in history, 3 credit hours in literature, 2 credit hours in the fine arts, 3 credit hours in the natural sciences, and 3 credit hours in mathematics. These required hours are fulfilled by the courses specified below, or by those approved by the Academic Dean.
2. Forty-five (45) of the credit hours must be from upper-division courses.
3. Ordinarily, the last 30 credit hours must be in residence at Saint Joseph Seminary College.
4. Students who enter this program already having earned a B.A. or B.S. must complete 60 credit hours beyond that degree.
5. The foreign language requirement is to be satisfied by the study of Latin. By exception, the Academic Dean may substitute another foreign language.
6. In accord with the United States Conference of Catholic Bishops' Program of Priestly Formation, the Philosophy requirements are to include the study of the history of philosophy, logic, epistemology, philosophy of nature, metaphysics, natural theology, philosophical anthropology, and ethics.
7. Maintenance of a cumulative C average in the courses applicable toward the degree and in Philosophy courses.
8. Payment of the graduation fee and presence at the graduation exercises are required of all who receive a degree.



## COURSE OF STUDY

### FIRST YEAR

<b>FALL SEMESTER</b>	<b>CREDIT</b>
LAT 1311 Basic Latin I	3
PHI 3311 Introduction to Philosophy and Philosophical Research	3
PHI 3321 Logic	3
PHI 3331 Ancient Philosophy	3
THE 4391 Catholic Profession of Faith	3
	15

<b>SPRING SEMESTER</b>	<b>CREDIT</b>
LAT 1312 Basic Latin II	3
PHI 3312 Medieval Philosophy	3
PHI 3322 Metaphysics	3
THE 4392 Celebrating the Christian Life	3
Elective	3
	15

### SECOND YEAR

<b>FALL SEMESTER</b>	<b>CREDIT</b>
THE 2311 Old Testament	3
PHI 3341 Ethics	3
PHI 4311 Modern Philosophy	3
PHI 4321 Epistemology	3
THE 3312 Life in Christ	3
Elective or Language	3
	18

<b>SPRING SEMESTER</b>	<b>CREDIT</b>
PHI 4312 Contemporary Philosophy	3
PHI 4322 Philosophical Anthropology	3
PHI 4332 Natural Theology	3
THE 2312 New Testament	3
THE 4312 Fundamental Theology	3
Elective or Language	3
	18

Total Credit Hours

60 transfer + 66 = 126

## PRE-THEOLOGY PROGRAM

Saint Joseph Seminary College offers an integrated two-year program of spiritual and academic formation for students who are preparing to enter a Roman Catholic theologate but who have never participated in a seminary formation program. The Pre-Theology program offers the basic requirements in philosophy and undergraduate

necessary for entrance into the theologate and provides students with supplemental academic formation, based on the four parts of the Catechism of the Catholic Church, which are designed to develop their appreciation of the Catholic heritage while deepening their own spiritual journeys. Designed primarily for the needs of second-career candidates and other college graduates, the program is flexible enough to accommodate the specific needs of individual students.

Before beginning theological studies, the candidate must fulfill certain academic requirements. But the candidate must also make a transition from previous commitments, routines and concerns if he is to enter fruitfully into the total formation program of the theologate. Such a transition is not merely academic but also has broader intellectual, spiritual, human, and pastoral aspects.

The academic requirements set by the United States Conference of Catholic Bishops' Program of Priestly Formation (a minimum of 30 semester hours in philosophy, including a series of specified course areas, and 12 semester hours in undergraduate theology) cannot be accomplished in a single year. Thus, Saint Joseph Seminary College, with an academic curriculum set within the context of holistic priestly formation and an atmosphere of reflection, offers an ideal setting for the total process, which enables the candidate to stabilize his decision to follow Christ as a priest.

Because of the varied cultural and educational backgrounds of these candidates, the Pre-Theology Program is both structured and flexible, fulfilling the necessary prerequisites while still addressing individual needs. It also serves as a further screening process, so that the focus of the candidate, his diocese, and the theologate will be more clearly defined when theological formation begins.

The Pre-Theology Program allows the candidates to spend energy and quality time on the multifaceted issues of ministry and personal dedication to Christ and His Church:

- It acquaints the candidate with the basics of Catholic culture and tradition.
- It allows the candidate to participate actively in ordered liturgical prayer, while cultivating private prayer and devotion.
- It furnishes the candidate with a community context while guiding him into the solitude of a celibate life style.
- It engages the candidate in basic pastoral activity.
- It challenges the candidate with serious academic responsibilities.

## COMPONENTS OF THE PRE-THEOLOGY PROGRAM

Spiritual Formation: Special consideration is given to the age and individual needs of the candidate. As a rule, he participates in the regular Seminary Spiritual Formation Program: daily Eucharist and Morning and Evening Prayer; weekly formation discussion groups, under a formation moderator; semi-annual days of recollection; annual Holy Week retreat and participation in the Paschal Triduum; personal contact with a spiritual

director and availability of the Sacrament of Reconciliation. Many religion courses in the Pre-Theology curriculum also pertain to spiritual formation.

**Pastoral Formation:** This element is integral to the two-year program and aims to provide a variety of experiences appropriate for a more mature seminarian. Through weekly assignment in the first year and participation in the Mission Immersion Program in the second year, the seminarian is encouraged to broaden his personal pastoral vision.

**Human Formation:** Participants in the Pre-Theology Program live in a seminary residence designed for older students (Vianney Hall). They are active members of the Student Government Association and participate in all its activities and events.

**Intellectual Formation:** The basic curriculum has been established to help the candidate acquire a philosophical mindset adequate for the study of systematic theology. Undergraduate theology courses are designed to answer the demands for in-depth formation in the Catholic tradition while preparing the candidate for theological study and for further priestly formation.

## PRE-THEOLOGY CURRICULUM

### FIRST YEAR

FALL SEMESTER	CREDIT
LAT 1311 Basic Latin I	3
PHI 3311 Introduction to Philosophy and Philosophical Research	3
PHI 3321 Logic	3
PHI 3331 Ancient Philosophy	3
THE 4391 Catholic Profession of Faith	3
	15

SPRING SEMESTER	CREDIT
LAT 1312 Basic Latin II	3
PHI 3312 Medieval Philosophy	3
PHI 3322 Metaphysics	3
THE 4312 Fundamental Theology	3
THE 4392 Celebrating the Christian Life	3
	15

### SECOND YEAR

FALL SEMESTER	CREDIT
PHI 3341 Ethics	3
PHI 4311 Modern Philosophy	3
PHI 4321 Epistemology	3
THE 2311 Old Testament	3
THE 3312 Life in Christ	3
	15

SPRING SEMESTER	CREDIT
PHI 4312 Contemporary Philosophy	3
PHI 4322 Philosophical Anthropology	3
PHI 4332 Natural Theology	3
THE 2312 New Testament	3
THE 4394 Catholic Tradition of Prayer	3
	15
Total Credit Hours	60

## DEPARTMENTS OF INSTRUCTION

### LANGUAGE, LITERATURE, AND FINE ARTS

Chair: Hinojosa

English Language Skills: Beaulieu-Grace, Laurent, Lupinetti, Strongson-Aldape

Information Literacy: Montalbano, Wood

Fine Arts and Music: Frederick, Silva

Foreign Language: Hinojosa, Williams

Literature: Bain, Calmes, Heil

#### Fine Arts

ART 1312 ART HISTORY 3 sem. hrs.

A study of art and history from Pre-history to Post-Modern periods, emphasizing design elements and historical backgrounds.

MUS 1101, 1102 SCHOLA 1 sem. hr.

Choir for the performance of sacred music chiefly in the liturgy of the Abbey and Seminary College. Membership by audition. Hours earned do not count for degree requirements. May be repeated each semester.

MUS 2311 CLASSICAL MUSIC 3 sem. hrs.

A study of the historical periods of Western classical music and their important forms, styles, composers and works.

MUS 3313 SACRED MUSIC 3 sem. hrs.

An overview of the trends, composition, and practice of liturgical music in the Christian tradition from Middle Ages to the present. Included will be an analysis of key documents on music promulgated by the Roman Catholic Church  
Prerequisite: MUS 2311

MUS 3333 SPECIAL TOPICS IN MUSIC  
Topics Vary.

1 - 3 sem. hrs.

## English Language Skills

RES 0091 BECOMING A MASTER STUDENT 1 sem. hr.

An introduction to the underlying concepts that form the basis of lifelong learning, enabling learners to master information literacy skills, become more self-directed, and assume greater control over their own learning. Strategies for time management, critical reading, basic study skills, test taking, note taking, and memory retention will be explored. The student may be excused from this course at the discretion of the academic dean. Hours earned do not count for degree requirements.

## Language

ENG 1300 DEVELOPMENTAL ENGLISH 3 sem. hrs.

Basic writing instruction for those students whose placement test scores indicate weak writing skills. This class is a preparation for ENG 1311 and does not apply toward degree requirements. A final grade of C is required for registration for ENG 1311.

ENG 1311 ENGLISH COMPOSITION I 3 sem. hrs.

Instruction in academic writing with emphasis on the production of both expository and argumentative essays. In conjunction with RES 0091, study of the principles of research and documentation. Entry is based on placement test scores. A final grade of C is required for registration for ENG 1312.

ENG 1312 ENGLISH COMPOSITION II 3 sem. hrs.

Continuation of instruction in academic writing and research. Introduction to myth and to its expression in literary narrative. A final grade of C is required for enrollment in literature courses. Prerequisite: ENG 1311.

ENG 1322 INTRODUCTION TO PUBLIC SPEAKING 3 sem. hrs.

An instruction in organizing and delivering oral communications before various audiences, with an emphasis on developing skills in analysis and persuasive speaking.

ENG 3333 SPECIAL TOPICS IN ENGLISH 3 sem. hrs.

Topics vary. Prerequisite: ENG 1312

FRN 1311 BASIC FRENCH I 3 sem. hrs.

Beginning course for students with no previous knowledge of French. The course provides a foundation in the language and culture of francophone countries.

FRN 1312 BASIC FRENCH II 3 sem. hrs.  
Continuing course for students who have completed Basic French I or the equivalent.  
Prerequisite: FRN 1311

GRK 1311 BASIC NEW TESTAMENT GREEK I 3 sem. hrs.  
An introductory study of the popular style of Greek (Koine) used by the New Testament writers. Primary emphasis is placed in this first course on mastering the simpler nouns and adjectives and on the formation and use of the indicative in verbs.

GRK 1312 BASIC NEW TESTAMENT GREEK II 3 sem. hrs.  
Continuation of Basic New Testament Greek I. By course end, students will have a working vocabulary of approximately 500 words and will be able to read the simpler parts of the New Testament with intelligent use of a lexicon. Prerequisite: GRK 1311

GRK 2311 NEW TESTAMENT GREEK READINGS I 3 sem. hrs.  
Translation and grammatical analysis of selected passages from the Gospels.  
Prerequisite: GRK 1312

GRK 2312 NEW TESTAMENT GREEK READINGS II 3 sem. hrs.  
Translation and grammatical analysis of selected passages from the Acts of the Apostles and Letters of St. Paul. Prerequisite: GRK 2311

LAT 1311 BASIC LATIN I 3 sem. hrs.  
An introduction to the basic grammar, syntax, and vocabulary of Latin, with emphasis placed on the development of basic skills in reading and translating Latin. Prerequisite: Enrollment in ENG 1311 or higher

LAT 1312 BASIC LATIN II 3 sem. hrs.  
A continuation of Basic Latin I, with emphasis given to building vocabulary. Prerequisite: LAT 1311

LAT 2311 LATIN READINGS I 3 sem. hrs.  
Review of Latin grammar and syntax. Readings and translation of classical and ecclesiastical texts. Prerequisite: LAT 1312

LAT 2312 LATIN READINGS II 3 sem. hrs.  
Continued reading and translation of classical and ecclesiastical texts.  
Introduction to Medieval Latin. Prerequisite: LAT 2311

LAT 3311 ADVANCED LATIN I 3 sem. hrs.  
Continued reading of more advanced Latin text, some emphasis placed on the composition of original Latin texts. Prerequisite: LAT 2312

LAT 3312 ADVANCED LATIN II 3 sem. hrs.  
Additional reading of advanced Latin text with further emphasis on the composition of original Latin texts. Prerequisite: LAT 3311

SPN 1311 BASIC SPANISH I 3 sem. hrs.  
Vocabulary, language patterns and grammar are introduced and applied in the context of practical communication such as greeting others and getting acquainted; identifying yourself, your family, your studies; talking about your activities; shopping; idiomatic expressions. The class includes writing dialogues, oral and written exercises, practical use of Spanish using the internet, partner work and written assignments. You will also learn cultural information about values, beliefs and practices related to the above situations and to speakers of Spanish. You will learn about the diverse cultural contexts of the Spanish language including vocabulary associated with religious traditions and devotions in Spain and Spanish Speaking America.

SPN 1312 BASIC SPANISH II 3 sem. hrs.  
Continuing course for students who have completed Basic Spanish I or the equivalent. Prepares the student for basic proficiency. Prerequisite: SPN 1311

SPN 2311 INTERMEDIATE SPANISH I 3 sem. hrs.  
Vocabulary, language patterns and grammar in the past tenses are introduced and applied in the context of practical communication such as getting acquainted; identifying yourself, your family, your studies; talking about your activities; shopping; and ordering something to eat and drink. The lessons include dialogues, oral and written exercises, use of video and digital technology, role-playing, partner work and written assignments. You will also learn cultural information about values, beliefs and practices related to the above situations and to Spanish speakers in Spain and in Spanish Speaking America. Through film and news programs, you will learn about the diverse cultural contexts of the Spanish language including religious traditions and liturgical practices. Prerequisite: SPN 1312

SPN 2312 INTERMEDIATE SPANISH II 3 sem. hrs.  
Continuing course for students who have completed Intermediate Spanish I or the equivalent. Stresses proficiency in speaking and reading. Prerequisite: SPN 2311

## Literature

LIT 2312 INTRODUCTION TO LITERATURE 3 sem. hrs.  
An introduction to techniques of writing and analyzing literary texts. Through lecture, discussion, and writing, the course will examine short stories and poems under various literary critical modes. Students will generate a series of microthemes, reflections, close

analyses, and a research paper investigating and responding to critical interpretations of the selected readings. In addition, students will be introduced to genres and periods of literature and the philosophical and theological principles and cultural and historical currents that inform literature. Prerequisite: ENG 1312

LIT 3311 WORLD LITERATURE I 3 sem. hrs.  
(pre 5c A.D.) Literature of the Ancient World: A study of the writers and their works that best represent both the Western Judeo-Christian and Greco-Roman worlds as well as that of Eastern cultures. Prerequisite: ENG 1312

LIT 3312 WORLD LITERATURE II 3 sem. hrs.  
(the 5th to the 15c): Literature of the Medieval World: A study of the writers and their works that best represent both the traditional Western and Eastern canons. Prerequisite: ENG 1312

LIT 3333 SPECIAL TOPICS IN LITERATURE I 3 sem. hrs.  
Topics vary. Prerequisite: ENG 1312

LIT 3334 SPECIAL TOPICS IN LITERATURE II 3 sem. hrs.  
Topics vary. Prerequisite: ENG 1312.

LIT 4311 WORLD LITERATURE III 3 sem. hrs.  
(16th c to 1850): Early Modern Literature: Representative literature from the Western and Eastern canons along with works from the Americas encompassing the Early Modern and Romantic Periods. Prerequisite: ENG 1312

LIT 4312 WORLD LITERATURE IV 3 sem. hrs.  
(1850 to today): Contemporary World Literature: Representative Western and Eastern literature and literature of the Americas and the African Diaspora encompassing the beginnings of realism through modernism and post-modernism. Prerequisite: ENG 1312

## PHILOSOPHY AND THEOLOGICAL STUDIES

Chair: Edler

Philosophy: Bain, Edler, Foley, Fontana, Gwozdz, Hayes

Theological Studies: Arcement, Berger, Burns, Clark, Farge, Hayes, Israel

### Philosophy

PHI 3311 INTRODUCTION TO PHILOSOPHY AND PHILOSOPHICAL RESEARCH 3 sem. hrs.



This course surveys the major fields of philosophy, including logic, epistemology, metaphysics, ethics and the history of philosophy as divided into ancient, medieval, and modern periods. As the gateway course for the QEP, this course also offers instruction in writing in the field of philosophy, instructing students in the writing process to produce philosophy papers, in how to formulate a thesis and develop it comprehensively in philosophy papers, and how to identify scholarly sources in philosophy and cite them according to Turabian style.

PHI 3331 ANCIENT PHILOSOPHY 3 sem. hrs.  
Greek and Roman philosophy with special attention given to Plato and Aristotle.  
Prerequisite: PHI 3311 or approval of Academic Dean

PHI 3312 MEDIEVAL PHILOSOPHY 3 sem. hrs.  
Examines the history of philosophical thought in late antiquity through its dissolution in the fourteenth century, with emphasis on the philosophy of St. Thomas Aquinas.  
Prerequisite: PHI 3311 or approval of Academic Dean

PHI 3321 LOGIC 3 sem. hrs.  
A comprehensive introduction to Aristotelian term logic.

PHI 3322 METAPHYSICS 3 sem. hrs.  
This course will explore the major issues of a Thomistic metaphysics and its rival alternatives. Prerequisite: PHI 3311 or approval of Academic Dean

PHI 3341 ETHICS 3 sem. hrs.  
Review of the various ethical systems in Western thought with an emphasis on evaluating the historical development of moral thought in the West, including Aristotle, Aquinas and the Natural Law tradition, British Utilitarianism, and Kant. Prerequisite: PHI 3311 or approval of Academic Dean

PHI 3313 PHILOSOPHY OF ST. AUGUSTINE 3 sem. hrs.  
This is a course in the early philosophical thought of St. Augustine of Hippo. As such, it will touch upon questions that concerned Augustine in his early life up to the time of the Confessions in 397: questions concerning the existence and nature of God, the ability of the human mind to know truth, the nature of the soul, the problem of sin and evil, free will, and human origin and destiny. A careful reading of the Confessions will serve as the major framework for discussion.  
Prerequisite: PHI 3311 or approval of Academic Dean

PHI 3333 SPECIAL TOPICS IN PHILOSOPHY I 3 sem. hrs.  
Topics vary. Prerequisite: PHI 3311 or approval of Academic Dean

- PHI 3334 SPECIAL TOPICS IN PHILOSOPHY II 3 sem. hrs.  
Topics vary. Prerequisite: PHI 3311 or approval of Academic Dean
- PHI 4311 MODERN PHILOSOPHY 3 sem. hrs.  
Involves a critical analysis of texts representative of the modern period from 1600 to 1800. Prerequisite: PHI 3311 or approval of Academic Dean
- PHI 4312 CONTEMPORARY PHILOSOPHY 3 sem. hrs.  
Surveys of major philosophical trends from 1800 to the present with a concentration on critical analysis of readings representative of the chief thinkers of the period. Prerequisite: PHI 3311 or approval of Academic Dean
- PHI 4321 EPISTEMOLOGY 3 sem. hrs.  
This course will expose the students to the fundamental issues in a realist epistemology. It will discuss issues such as skepticism, degrees of certitude, and the role of truth in human knowing. These questions will be seen in relationship to other views proposed by great philosophers in the Western tradition such as empiricism and Kantian transcendental idealism. Prerequisite: PHI 3311 or approval of Academic Dean
- PHI 4322 PHILOSOPHICAL ANTHROPOLOGY 3 sem. hrs.  
This course surveys major issues in philosophical anthropology, including materialist versus non-materialist conceptions of the human person, nihilistic versus optimistic views of the human person, determinism versus free will, and the affirmation and denial of human nature (realism versus nominalism). Prerequisite: PHI 3311 or approval of Academic Dean
- PHI 4332 NATURAL THEOLOGY 3 sem. hrs.  
This course examines the relationship of faith and reason as well as science and religion. A careful examination will be had concerning the ontological and cosmological arguments for God's existence as well as contemporary issues such as creation and the Big Bang, and evolution and the Intelligent Design theory. Prerequisite: PHI 3311 or approval of Academic Dean

## Theological Studies

- THE 1311 INTRODUCTION TO CATHOLICISM 3 sem. hrs.  
This course will proceed through the three basic levels of the Catholic Faith: Doctrine, liturgy and sacraments, and the moral life. The purpose of this course is to arrive at a basic understanding of Catholic catechism and to provide a matrix by which the teachings of the Catholic faith form a unified whole.

- THE 2311 THE CATHOLIC OLD TESTAMENT 3 sem. hrs.  
 Introduces books of the Catholic Old Testament with an emphasis on the literary, historical and theological dimensions. Prerequisite: THE 1311
- THE 2312 NEW TESTAMENT 3 sem. hrs.  
 Introduces the Books of the New Testament with emphasis on the form and content of each. Prerequisite: THE 2311 or permission from the Academic Dean
- THE 3312 LIFE IN CHRIST 3 sem. hrs.  
 This course stresses the Christian application of basic ethical norms and values as present in Part III of the Catechism of the Catholic Church. Special emphasis will be given to the relationship between the social, doctrinal, and moral traditions of the Church.
- THE 3313 SACRED ART 3 sem. hrs.  
 A study of the relationship between the visual arts and Christian theology. Church architecture and liturgical art throughout the centuries will be surveyed with particular emphasis on implication for the contemporary. Prerequisites: Concurrent enrollment in or completion of THE 1311, ART 1312
- THE 3323 SURVEY OF CHURCH HISTORY 3 sem. hrs.  
 Focuses on the development of the Catholic Christian Church from Pentecost until the present and examines the development of doctrine and its controversies, the evolution of the papacy, forms of ministry, and major movements that have formed the Church. Prerequisite: THE 1311
- THE 3333 SPECIAL TOPICS IN THEOLOGICAL STUDIES I 3 sem. hrs.  
 Topics vary. Prerequisite: THE 1311
- THE 3343 SPECIAL TOPICS IN THEOLOGICAL STUDIES II 3 sem. hrs.  
 Topics vary. Prerequisite: THE 1311
- THE 4311 LITURGICAL AND PERSONAL PRAYER 3 sem. hrs.  
 The first part of this course will explore the nature and variety of personal forms of prayer within the Roman Catholic tradition. The second part of this course will explore the origins, development, ritual components, and theological significance of liturgical prayer within the Roman Catholic tradition.
- THE 4312 FUNDAMENTAL THEOLOGY 3 sem. hrs.  
 This course treats the foundational issues that are a necessity for the study of Catholic theology. The course begins with an examination of the nature, method, and sources of theology. Topics covered in the course include God, His existence and attributes, the

relation between faith and reason, the necessity of divine revelation, biblical inspiration and interpretation, and the development of dogmas and authority in the Church. Special emphasis is given to the role of philosophy in Catholic theological reflection.

THE 4391 THE CATHOLIC PROFESSION OF FAITH 3 sem. hrs.

A study of the basics of the Catholic Profession of Faith as developed in the Catechism of the Catholic Church. Following the course of Part I of the Catechism, the course will give attention to the many patristic citations given in the text with an aim of arriving at a basic understanding of the nature of Divine Revelation, Theological Anthropology, Christology, Trinitarian Theology, and Ecclesiology. Limited to students in certain degree or certificate programs except by permission of the Academic Dean.

THE 4392 CELEBRATING THE CHRISTIAN LIFE 3 sem. hrs.

Views the dispensation of the fruits of Christ's Paschal mystery in the celebration of the Catholic Church's sacramental liturgy and rites as presented by Part II of the Catechism of the Catholic Church. Limited to students in certain degree or certificate programs except by permission of the Academic Dean.

THE 4394 THE CATHOLIC TRADITION OF PRAYER 3 sem. hrs.

Surveys the basic teachings on liturgical and private prayer from the Catholic tradition and the fourth part of the Catechism of the Catholic Church. Limited to students in certain degree or certificate programs except by permission of the Academic Dean.

## **SOCIAL, BEHAVIORAL, AND NATURAL SCIENCES**

Chair: Seid

Behavioral Science (Psychology): Barocco, Seid

Social Science (History): DeFrange, Hinojosa, Lane

Mathematics: Penick

Natural Science: Arbo

## **History**

HIS 1311 HISTORY OF WESTERN CIVILIZATION 3 sem. hrs.

This course will undertake a study of the various historical, artistic, and literary periods of Western Europe beginning with the early Middle Ages up through the 19th century. The course will also present important aspects about religious and political people who are important in defining and discussing artistic periods and literary genres.

HIS 1312 UNITED STATES HISTORY 3 sem. hrs.

This course will present an outline of general U.S. history from the colonial period up to the modern day.

- HIS 3311 GRAECO-ROMAN CIVILIZATION 3 sem. hrs.  
 A survey of political and cultural contributions of classical Greece and Rome from the early Aegean civilizations to the rise and fall of Rome, including the rise of Christianity. Junior standing or permission of the Academic Dean.
- HIS 3312 MEDIEVAL HISTORY 3 sem. hrs.  
 Study of medieval institutions with special emphasis on the heritage of the Middle Ages, the rise and decline of the Church, the emergence of the European state system and the main currents of medieval thought and letters. Junior standing or permission of the Academic Dean.
- HIS 3333 SPECIAL TOPICS IN HISTORY I 3 sem. hrs.  
 Topics vary.
- HIS 3334 SPECIAL TOPICS IN HISTORY II 3 sem. hrs.  
 Topics vary. Junior standing or permission of the Academic Dean.
- HIS 4304 HISTORY OF RELIGION IN THE UNITED STATES 3 sem. hrs.  
 An outline of general U.S history with an emphasis on the complex area of religious thought and patterns which influenced and were influenced by the political and cultural developments in American society.
- HIS 4311 RENAISSANCE HISTORY 3 sem. hrs.  
 Survey of the period of rebirth from 1300 to 1700 A.D., of intellectual and artistic activity, the growth of humanistic philosophy and the great change in the Catholic Church brought about by the Protestant Reformation. Junior standing or permission of the Academic Dean
- HIS 4312 ENLIGHTENMENT HISTORY 3 sem. hrs.  
 A study of the Enlightenment in Europe, 1650 to the middle of the 19th century, with particular attention to the cultural, social and religious activities in Britain and France relating to the history of scientific achievement during the period. Junior standing or permission of the Academic Dean.
- HIS 4313 CONTEMPORARY HISTORY 3 sem. hrs.  
 A study of the social, philosophical, religious, economic and political developments of the 20th and 21st century.

## Social and Behavioral Sciences

PSY 2311 INTRODUCTION TO PSYCHOLOGY 3 sem. hrs.  
The course will survey the major personality development theories and their application to daily living.

PSY 2312 SOCIAL PSYCHOLOGY 3 sem. hrs.  
Designed to cover contemporary social influences and the human response to shape social environment. Selected topics in the field and their theoretical bases will be surveyed. Prerequisite: PSY 2311

PSY 4311 HUMAN SEXUALITY AND RELATIONSHIPS 3 sem. hrs.  
The study of human sexuality and relationships is multidisciplinary by nature. This course will include biological, psychological, developmental, and sociological perspectives as well as health concerns and various implications for family life. Philosophical assumptions behind influential ideological treatments in the contemporary world will be subjected to philosophical and theological analysis. Prerequisite: SCI 1311 or equivalent

## Natural Sciences

MAT 1311 PRACTICAL MATHEMATICS 3 sem. hrs.  
An investigation of real-world financial decision making with a continued emphasis on technology, providing a strong foundation for current and future personal economic activities.

MAT 1311 PRACTICAL MATHEMATICS 3 sem. hrs.  
An investigation of real-world financial decision making with a continued emphasis on technology, providing a strong foundation for current and future personal economic activities.

SCI 1311 HUMAN BIOLOGY 3 sem. hrs.  
Introductory course in human biology with emphasis on cell structure, human physiology, genetics and embryology.

SCI 1312 ENVIRONMENTAL SCIENCE 3 sem. hrs.  
An examination of our global environment from a local perspective, human interaction with this environment and the impacts humans can have on the planet. Students will explore the relationship between the environment and economics, politics, philosophy, and ethics.

## LOCATION AND PHYSICAL PLANT

Located one mile off Louisiana Highway 25, four miles north of Covington, Saint Joseph Seminary College is one hour from downtown New Orleans and slightly more than an hour from Baton Rouge.

The Seminary College is ideally situated upon a fifteen-acre campus in the midst of the piney woods of the Ozone Belt. Artesian water and clean, invigorating air have justly brought fame to the region. Surrounding the college seminary is a 1,200-acre tract of rich forest land. A small river, the Bogue Falaya, meaning “Long Creek’ in the language of the Choctaw Indians who once inhabited the site, borders the western side of the campus.

The extensive campus, with its large gymnasium, two lakes, and football field, provides adequate recreational facilities for basketball, volleyball, baseball, touch football, hiking, and tennis.

Pius X Hall (1960), the large main building with two courtyards, houses administrative offices, faculty offices, a student oratory, a private meditation chapel, and 68 private rooms. Monumental statues of Saint Joseph and of the Mother of God, early works of Louisiana sculptor Frank Hayden, mark the front corner of the building and the large open courtyard known as Mary Plaza. An adjacent building, Borromeo Hall (1960), contains two classrooms on the ground floor. Vianney Hall, completely renovated in 2013, has 40 student rooms, each with a private bath. In addition to the rooms, there is a small chapel, laundry facilities, and a large lounge for social student gatherings. This residence hall is intended for older seminarians and for those who already have college degrees. Callais Residence Hall and Callais Academic Building were added in 2016. Callais Residence Hall has 48 rooms with private baths, a community room, and laundry facilities. Callais Academic Building has five classrooms, a study lounge, a conference room, and restroom facilities.

Other campus facilities include the Rouquette Library (1960); the Meinrad Hospitality Center (1960), which has accommodations for guests, exhibits and small group meetings; Benet Hall (1960), an auditorium with stage and equipment; a gymnasium (1952) with a basketball court, two large recreation rooms, and offices; a students’ dining hall (1918), accommodating over one hundred fifty students, with an adjacent lounge called The Wharf.

Saint Joseph Abbey Church dominates the landscape of the campus; it is here that the liturgical and religious life of the seminary college is most sharply focused. Extensive and colorful murals by Dom Gregory de Wit (1892-1978) of Holland add to the religious atmosphere and decor of the Abbey Church.

## DIRECTIONS

From New Orleans:

Take the Causeway north. Travel on US 190 past I-12, past LA 21 (go over the small bridge), and continue on US 190 past LA 437. Stay on US 190 until the junction of US 190 and LA 25 (traffic light at junctions; Shell service station on your left). US 190 turns off to the left toward Hammond. Do NOT go left. Instead, continue north on LA 25 for about 500 yards. Turn right on Airport Road, the first marked road. Stay on Airport Road until you reach a stop sign at the end of the road. Turn left onto River Road. Travel about 400 yards until you see a sign for Saint Joseph Abbey. Turn right onto the bridge. Welcome!

From Baton Rouge:

Take I-12 East, and exit at EXIT 63-B (Covington). Follow directions listed above (once you exit, you will already be North of I-12).

From Slidell:

Take I-12 West, and exit at EXIT 63-B (Covington). Follow direction listed above (once you exit, you will already be North of I-12).

## SAINT JOSEPH SEMINARY ALUMNI ASSOCIATION

PRESIDENT: Fr. Frank Giroir ('77)

VICE-PRESIDENT: Mr. William O'Regan IV ('96)

SECRETARY: Mr. Kenneth Richard ('90)

TREASURER: O. Franklin Morton ('69)

PAST PRESIDENT: Mr. Neal Hightower ('94)

VICE-RECTOR/DIR. ALUMNI AFFAIRS: Rev. Matthew Clark, O.S.B. ('80)

EX-OFFICIO BOARD MEMBER: Very Rev. Gregory M. Boquet, O.S.B. ('80)



# DIRECTORY

Letters, parcel post packages, freight and express:

Saint Joseph Seminary College, 75376 River Road, Saint Benedict, LA 70457-0009

Telephone:

Main Line	(985) 892-1800
President-Rector	(985) 867-2241 or (985) 867-2232
Vice Rector	(985) 867-2245
Academic Dean	(985) 867-2225
Dean of Students	(985) 867-2287
Registrar/Admissions	(985) 867-2273
Financial Aid	(985) 867-2273
Faculty	(985) 867-2238
FAX -- President Rector	(985) 867-2270
FAX -- Academic Dean	(985) 327-1085

Residence halls and telephones: (985) 867-2299

E-mail: [acsec@sjasc.edu](mailto:acsec@sjasc.edu)

Web site: [www.sjasc.edu](http://www.sjasc.edu)

Remittances: By check, draft, express or postal money order, payable to Saint Joseph Seminary College

Inquiries to: The Very Reverend President-Rector at the address above

Students for Saint Joseph Abbey:

Young men who desire to follow Christ in the way proposed by Saint Benedict by becoming members of Saint Joseph Abbey may upon application be received as students in the Seminary College.

E-mail: [abbeyvocations@sjasc.edu](mailto:abbeyvocations@sjasc.edu) or write to Vocations Director at the above address.

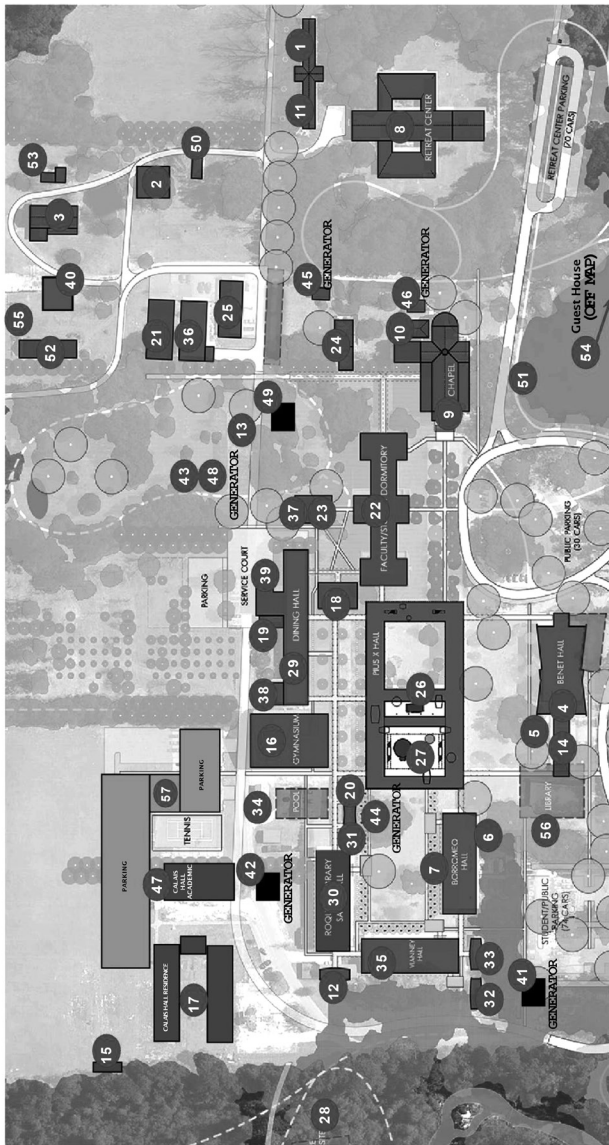
# INDEX

Abbey Youth Festival .....	11
Academic honors .....	24
Academic membership .....	13
Academic probation and suspension .....	24
Accommodation for disability, student.....	20
Accreditation .....	12
ACT .....	15-16, 26
Administration and ownership.....	13
Administrative officers .....	4
Staff .....	4
Admissions committee .....	16
Admissions information .....	15
Full-time students .....	16
Non-resident students .....	17
Advanced placement.....	25
Alumni association .....	46
Alumni director.....	46
Application, information required .....	15
Attendance .....	24
Audit.....	14
Bachelor of Arts in Philosophy and the Liberal Arts .....	27
Bachelor of Arts in Philosophy and Theological Studies.....	29
RA. in Philosophy and Theological Studies .....	??
Board of Trustees.....	4
Classification of students.....	21
College-Level Examination Program (CLEP).....	26
Contact information.....	47
Courses of instruction.....	31-44
Credit examinations.....	25
Credit transfer .....	25
Credit transfer, international.....	25-26
Curricula	
B.A. in Philosophy and the Liberal Arts.....	27
B.A. in Philosophy and Theological Studies .....	29
High school credits .....	16
History and vision.....	8-9

Honors, academic.....	24-25
Immunization .....	15
International credits .....	25
Language, Literature, and Fine Arts, Departments of.....	34
Courses .....	34-38
Fine arts .....	34
Language .....	35-37
Literature .....	37
Music .....	34
Library .....	12
Information commons.....	11
Loans, student.....	18-19
Location of facility and description .....	46
Map .....	back cover
Matriculation .....	16
Minimum general education requirements .....	20
Mission statement.....	8
Non-resident students.....	17
Ownership .....	12
Part-time student.....	17
Pell Grants (see financial aid).....	18-19
Philosophy and Theological Studies, Department of .....	38
Courses:	
Philosophy .....	38-40
Theological studies .....	41-42
Physical plant .....	46
Pre-theology Program .....	32
Components .....	33
Curriculum .....	33-34
Goals.....	32
Privacy Act.....	27
Probation, academic .....	24
Program of Priestly Formation .....	9-10
Psychological evaluation.....	16

Quality points.....	24
Re-admission policy .....	17
Re-admission procedure.....	18
Re-enrollment.....	18
Refund policy.....	13
Requirements for degrees .....	30
Residence requirement .....	30
Senior scholars program.....	15
Social, Behavioral, and Natural Sciences, Department of.....	42
Courses:	
Cultural anthropology.....	??
Geography .....	??
History .....	42-43
Natural sciences .....	44
Southern Association of Colleges and Schools (SACS) .....	12
Special programs.....	10
Application .....	15
Mission Immersion Program .....	10
ESL (English as a Second Language).....	11
Senior scholars .....	14
Student Government Association.....	10
Officers .....	10
Standing committees.....	10
Student information, release of.....	27
Suspension .....	24
Test of English as a Foreign Language (TOEFL).....	16
Transcripts, international .....	25
Transcripts, Saint Joseph Seminary College .....	26-27
Transfer credits .....	25
Transfer students, international.....	25
Veterans.....	19
Withdrawal.....	24

# SAINT JOSEPH COLLEGE



33 Spiritual Director Office

34 St. Lawrence Grill

35 Vianney Hall

36 Woodworks

37 Annex

38 Wharf

39 Kitchen

40 Honey Hut

41 GENERATOR #3 500KW

42 GENERATOR 400KW

43 GENERATOR 250KW

44 GENERATOR 35KW

45 GENERATOR #5 500KW

46 GENERATOR 500KW

47 Callais Hall Academic

48 Elect. Switch Gear Room 250KW

49 Domestic Pump House & Below-Grade Water Tank

50 Red House

51 Fire Pump House

52 Greenhouse

53 Small Barn Cat's House

54 Guest House (off map)

55 Pigeon Barn

56 Future Roquette Library

57 Basketball

1 Art Works

2 Bakery

3 Barn

4 Benet Hall

5 Benet Hall Boiler Room

6 Borromeo Boiler Room

7 Borromeo Hall

8 Retreat Center

9 Abbey Church

10 Church Boiler Room

11 Retreat Center Boiler Room

12 Faculty Residence

13 Garage

14 Gift Shop

15 Guest Trailer

16 Gym

17 Callais Residence Hall

18 Hospitality Center

19 Kitchen Boiler Room

20 Laundry

21 Maintenance Shop

22 Faculty/Student Dormitory

23 Dormitory Boiler Room

24 Central Plant

25 Old Maintenance Shop

26 Plus Boiler Room

27 Plus X & Admin Building

28 Sewer Treatment Plant

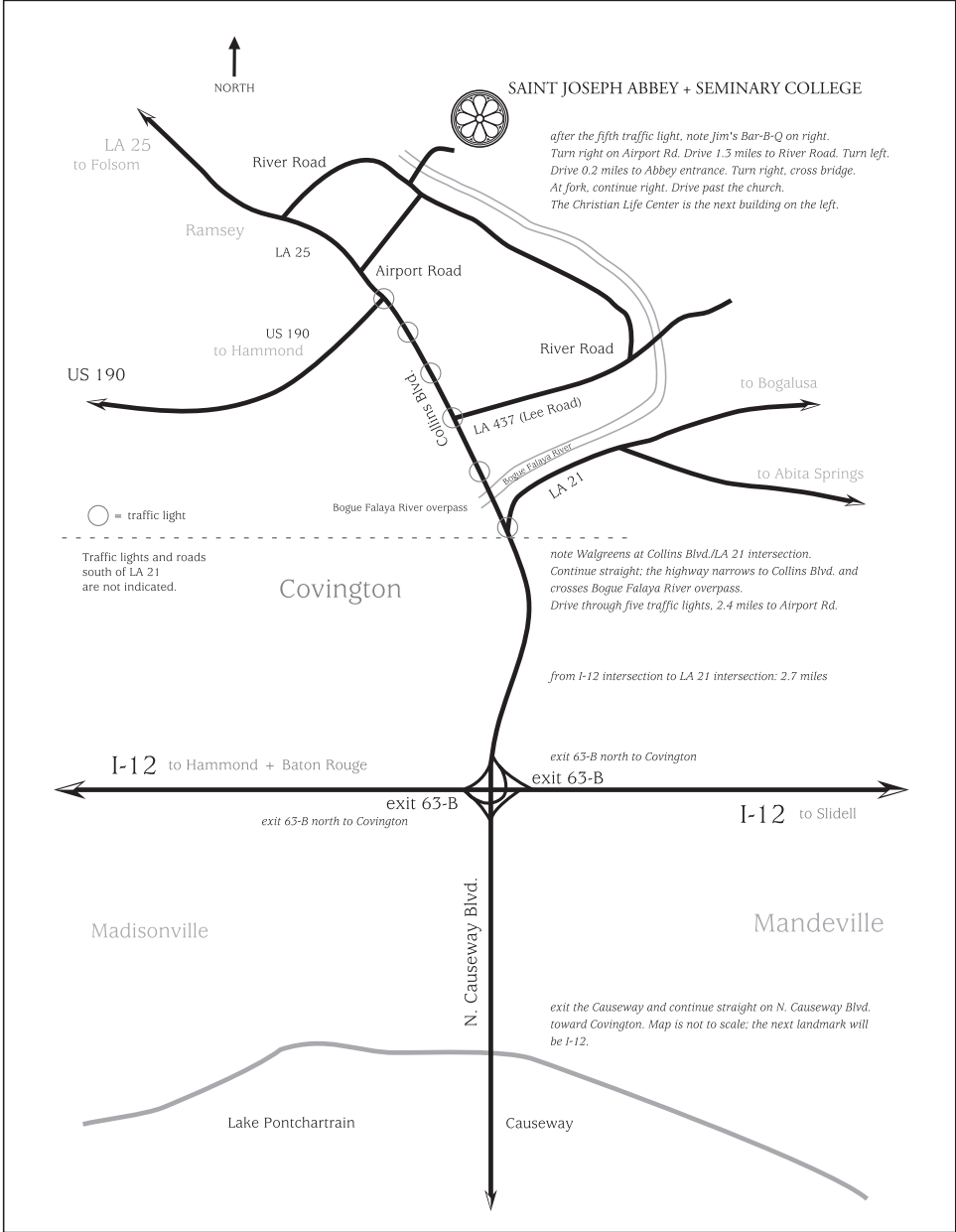
29 Dining Hall

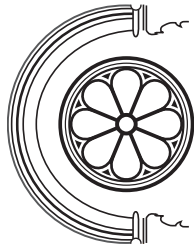
30 Savio Hall/Library

31 Boiler Room

32 Seminary Central Plant







---

**SAINT JOSEPH  
SEMINARY COLLEGE**

75376 River Road  
Saint Benedict, LA 70457

NONPROFIT  
ORGANIZATION  
U.S. POSTAGE

**PAID**

PERMIT #3  
Saint Benedict, LA